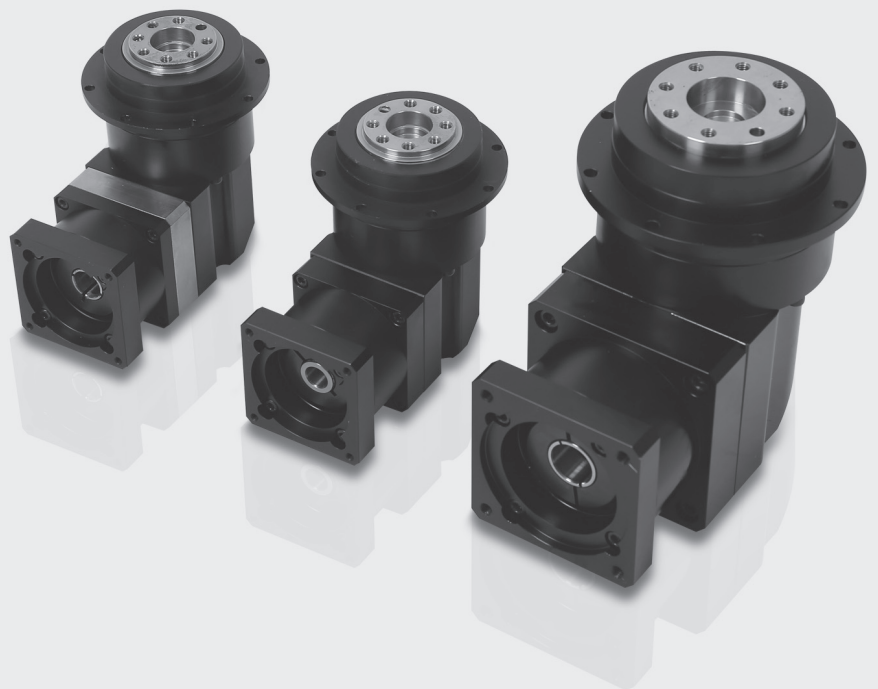


PD SERIES

Planetary Gearboxes High Precision High Speed

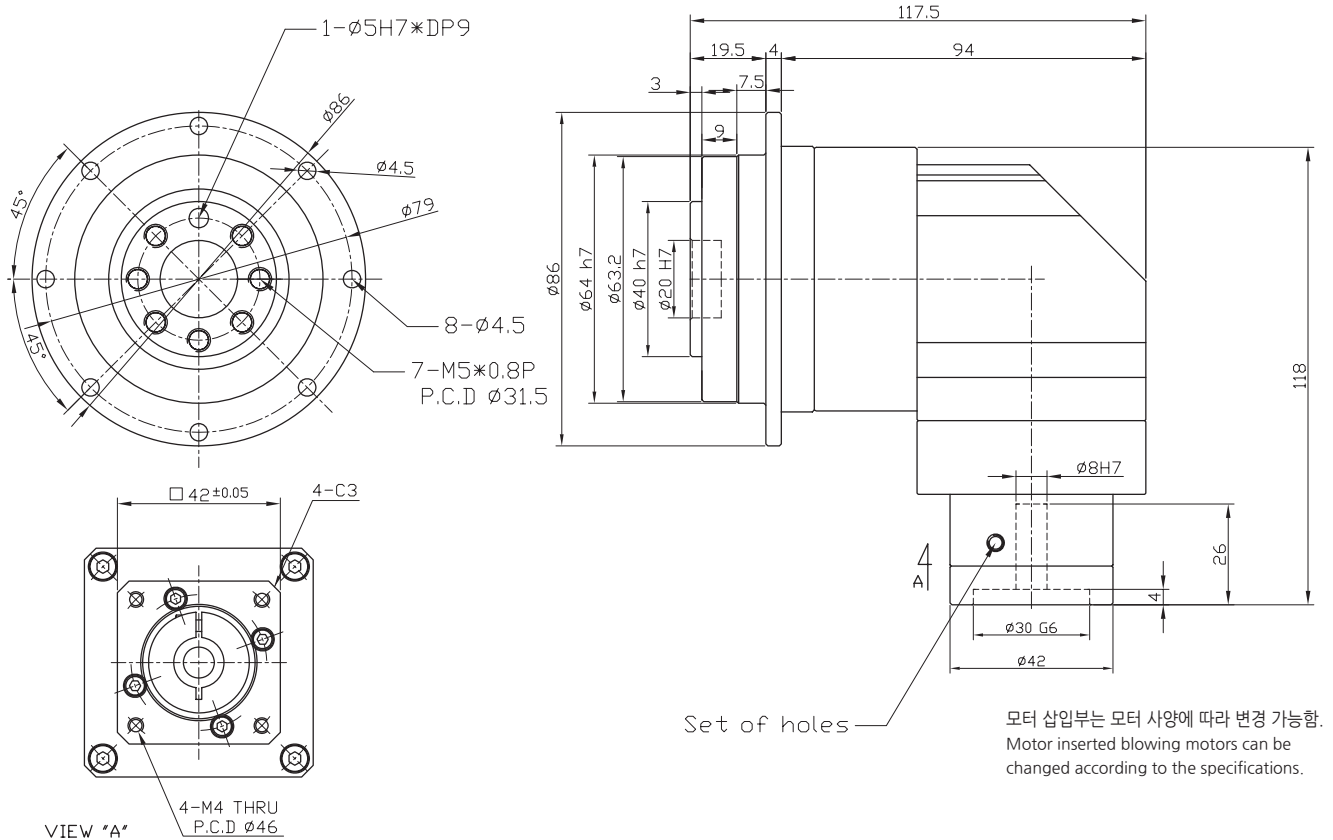
- 고강성, 고토크, 저소음, 구조개선을 통한 경량화 실현
- 오일리크를 방지하기 위하여 입력부의 오일씰 부분 개선
- PAR타입 베벨기어를 적용한 Angle 구조로 공간활용 극대화
- 고강성 하우징 채용으로 어떠한 모터든 대응 가능



PDR60-42-1,2 Stage

Ratio : 3 ~ 81

Applicable Motor : 50~100 W



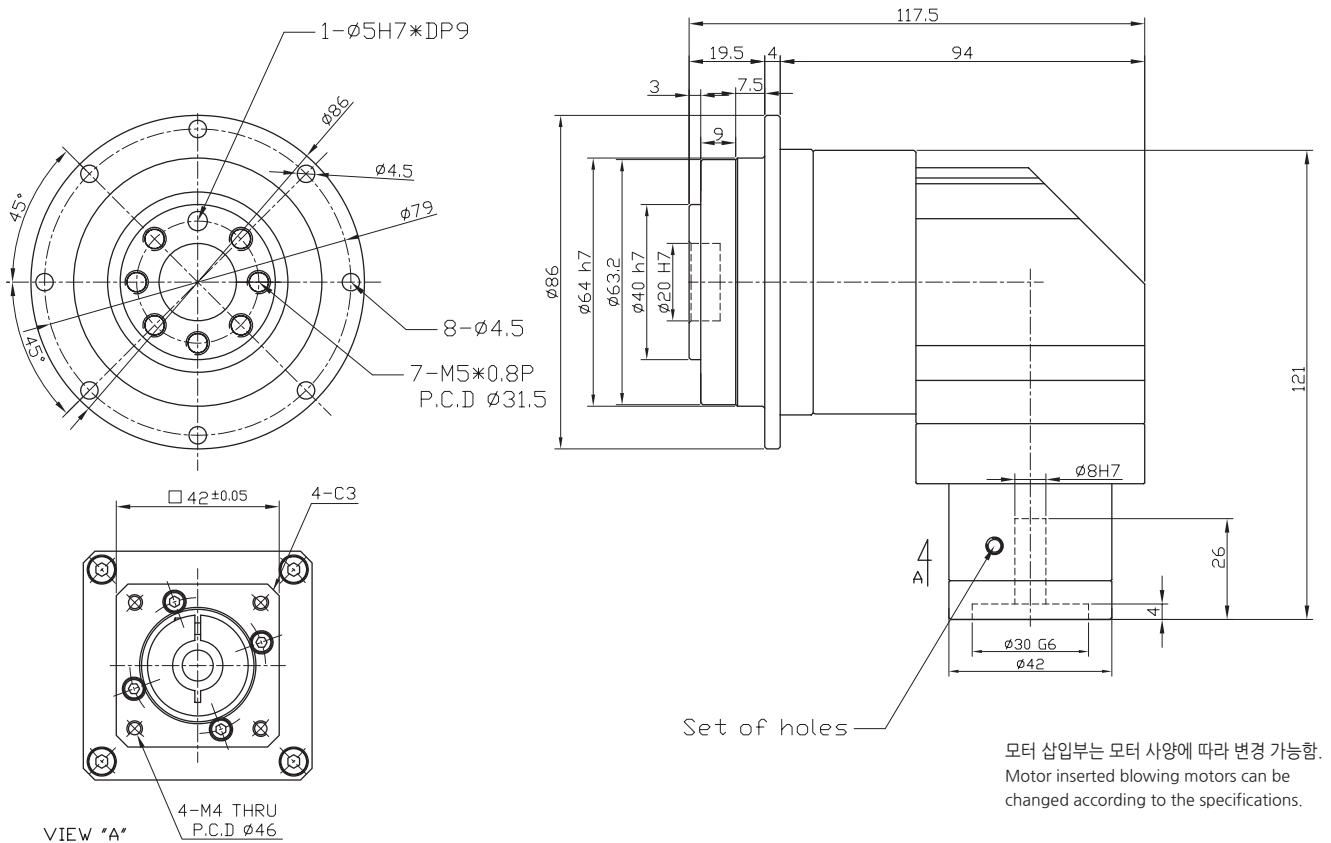
| Outline (□) | Stages | Rtio | Gear combinations | Nominal output torque (Nm) | Maximum output torque (Nm) | Nominal input speed (rpm) | Maximum input speed (rpm) |
|-------------------|-------------------------|------------------------|---|---------------------------------|----------------------------|---------------------------|---------------------------|
| φ 86 | 1 | 3 | 3*1 | 48 | 144 | 3000 | 6000 |
| | | 4 | 4*1 | 60 | 180 | | |
| | | 5 | 5*1 | 42 | 126 | | |
| | | 9 | 9*1 | 36 | 108 | | |
| | 2 | 12 | 3*4 | 48 | 144 | | |
| | | 15 | 3*5 | 48 | 144 | | |
| | | 16 | 4*4 | 60 | 180 | | |
| | | 20 | 4*5 | 60 | 180 | | |
| | | 27 | 3*9 | 48 | 144 | | |
| | | 36 | 4*9 | 60 | 180 | | |
| | | 45 | 5*9 | 42 | 126 | | |
| | | 81 | 9*9 | 36 | 108 | | |
| 무게(Weight) ±3% | 축직각(Radial load) (N) | 축방향(Axial load) (N) | Moment of inertia (kg.m ²) | Backlash (arc min) | 효율(Efficiency) (%) | 수명(Machinical Life) | |
| 1 | 2015 | 664 | 0.145 | BL1 : 5 min이하 BL2 : 10 min이하 | 90~95 | 20000 hr | |

* 주의 : 위 도표에 표기된 Output torque 수치는 기구특성 안전을 미적용 수치임.

PDR60-42-1,2 Stage 10대1

Ratio : 10 ~ 90

Applicable Motor : 50~100 W



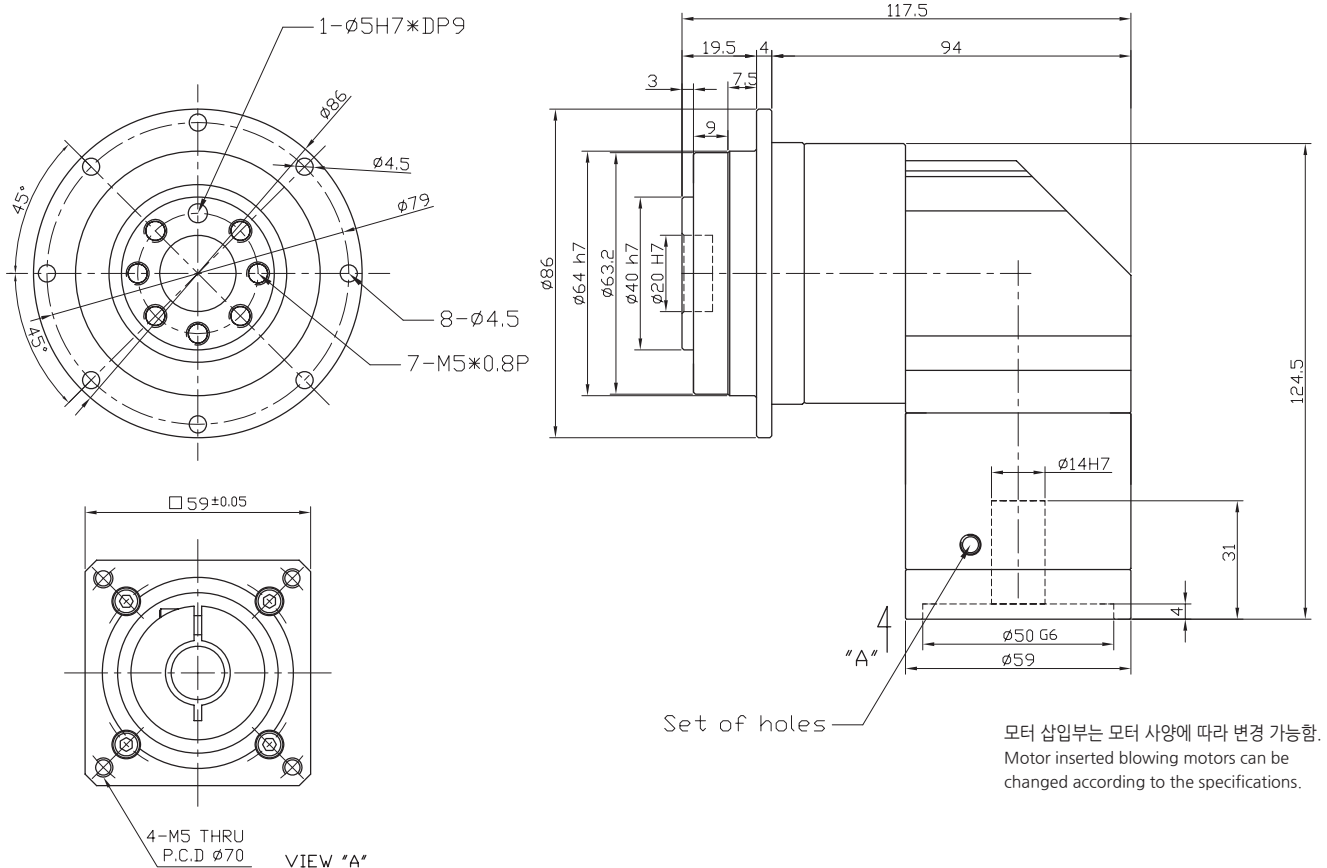
| Outline (□) | Stages | Rtio | Gear combinations | Nominal output torque (Nm) | Maximum output torque (Nm) | Nominal input speed (rpm) | Maximum input speed (rpm) |
|-------------------|-------------------------|------------------------|---|---------------------------------|----------------------------|---------------------------|---------------------------|
| φ 86 | 1 | 10 | 1*10 | 38 | 114 | 3000 | 6000 |
| | 2 | 30 | 3*10 | 48 | 144 | | |
| | | 40 | 4*10 | 60 | 180 | | |
| | | 50 | 5*10 | 42 | 126 | | |
| | | 90 | 9*10 | 36 | 108 | | |
| 무게(Weight) ±3% | 축직각(Radial load) (N) | 축방향(Axial load) (N) | Moment of inertia (kg.m ²) | Backlash (arc min) | 효율(Efficiency) (%) | 수명(Machinical Life) | |
| 1 | 2110 | 765 | 0.116 | BL1 : 5 min이하 BL2 : 10 min이하 | 95 | 20000 hr | |

* 주의 : 위 도표에 표기된 Output torque 수치는 기구특성 안전을 미적용 수치임.

PDR60-1,2 Stage

Ratio : 3 ~ 81

Applicable Motor : 200~400 W



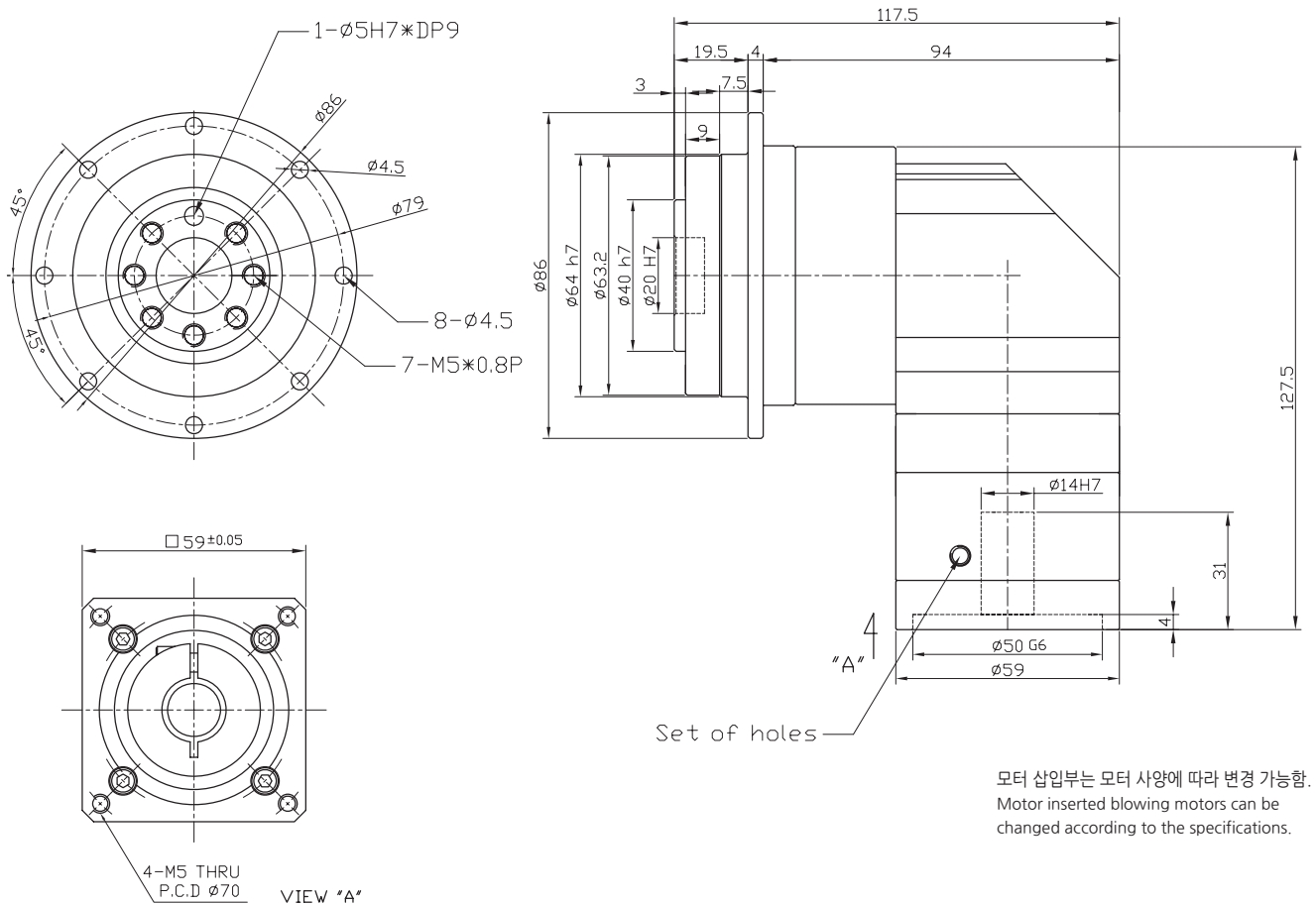
| Outline (□) | Stages | Rtio | Gear combinations | Nominal output torque (Nm) | Maximum output torque (Nm) | Nominal input speed (rpm) | Maximum input speed (rpm) |
|-------------------|-------------------------|------------------------|---|---------------------------------|----------------------------|---------------------------|---------------------------|
| φ 86 | 1 | 3 | 3*1 | 48 | 144 | 3000 | 6000 |
| | | 4 | 4*1 | 60 | 180 | | |
| | | 5 | 5*1 | 42 | 126 | | |
| | | 9 | 9*1 | 36 | 108 | | |
| | 2 | 12 | 3*4 | 48 | 144 | | |
| | | 15 | 3*5 | 48 | 144 | | |
| | | 16 | 4*4 | 60 | 180 | | |
| | | 20 | 4*5 | 60 | 180 | | |
| | | 27 | 3*9 | 48 | 144 | | |
| | | 36 | 4*9 | 60 | 180 | | |
| | | 45 | 5*9 | 42 | 126 | | |
| | | 81 | 9*9 | 36 | 108 | | |
| 무게(Weight) ±3% | 축직각(Radial load) (N) | 축방향(Axial load) (N) | Moment of inertia (kg.m ²) | Backlash (arc min) | 효율(Efficiency) (%) | 수명(Machinical Life) | |
| 1 | 2110 | 664 | 0.116 | BL1 : 5 min이하 BL2 : 10 min이하 | 95 | 20000 hr | |

* 주의 : 위 도표에 표기된 Output torque 수치는 기구특성 안전을 미적용 수치임.

PDR60-1,2 Stage 10대1

Ratio : 10 ~ 90

Applicable Motor : 200~400 W



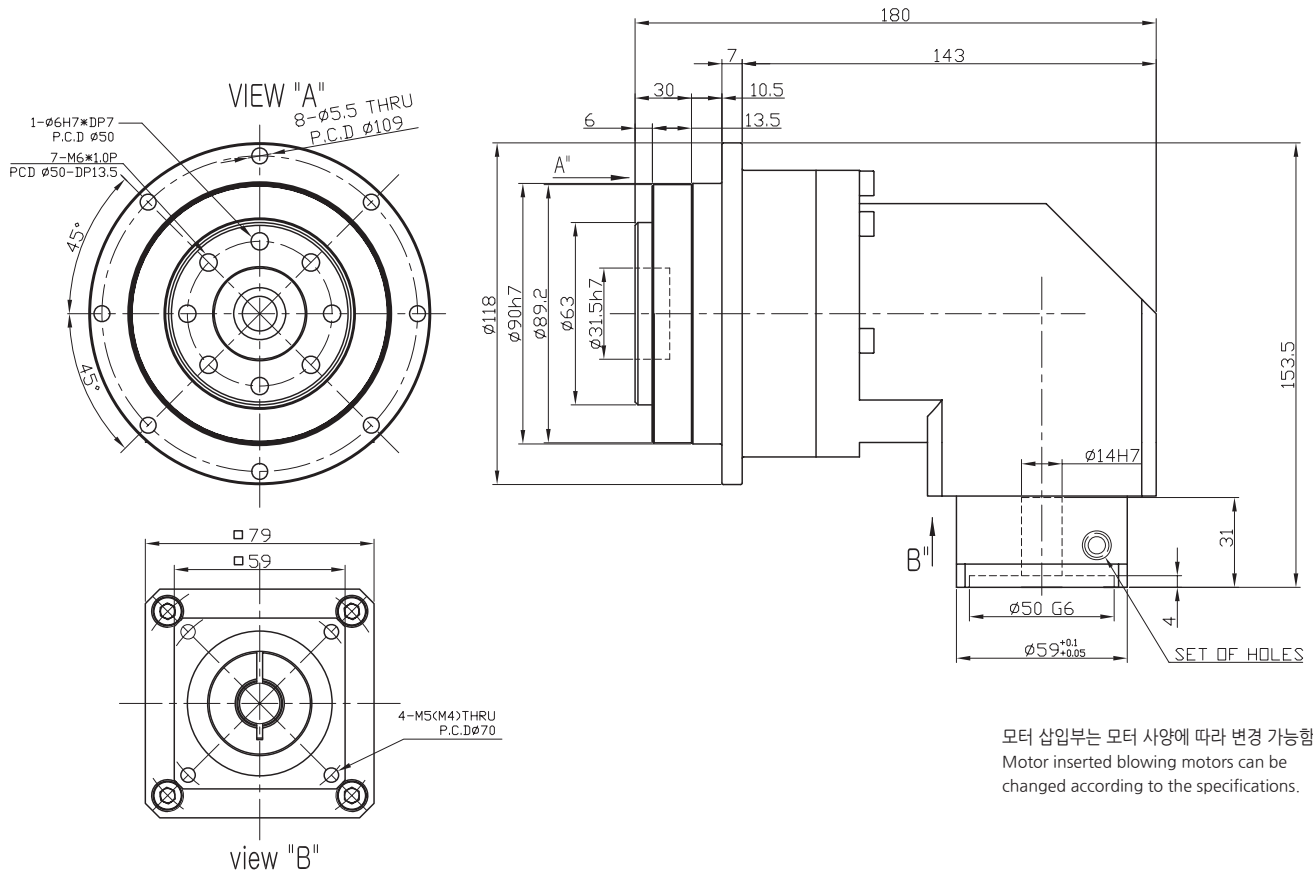
| Outline (□) | Stages | Rtio | Gear combinations | Nominal output torque (Nm) | Maximum output torque (Nm) | Nominal input speed (rpm) | Maximum input speed (rpm) |
|-------------------|-------------------------|------------------------|---|---------------------------------|----------------------------|---------------------------|---------------------------|
| φ 86 | 1 | 10 | 1*10 | 38 | 114 | 3000 | 6000 |
| | 2 | 30 | 3*10 | 48 | 144 | | |
| | | 40 | 4*10 | 60 | 180 | | |
| | | 50 | 5*10 | 42 | 126 | | |
| | | 90 | 9*10 | 36 | 108 | | |
| 무게(Weight) ±3% | 축직각(Radial load) (N) | 축방향(Axial load) (N) | Moment of inertia (kg.m ²) | Backlash (arc min) | 효율(Efficiency) (%) | 수명(Machinical Life) | |
| 1 | 2110 | 765 | 0.116 | BL1 : 5 min이하 BL2 : 10 min이하 | 95 | 20000 hr | |

* 주의 : 위 도표에 표기된 Output torque 수치는 기구특성 안전을 미적용 수치임.

PDR90-60-1,2 Stage

Ratio : 3 ~ 81

Applicable Motor : 200~400 W



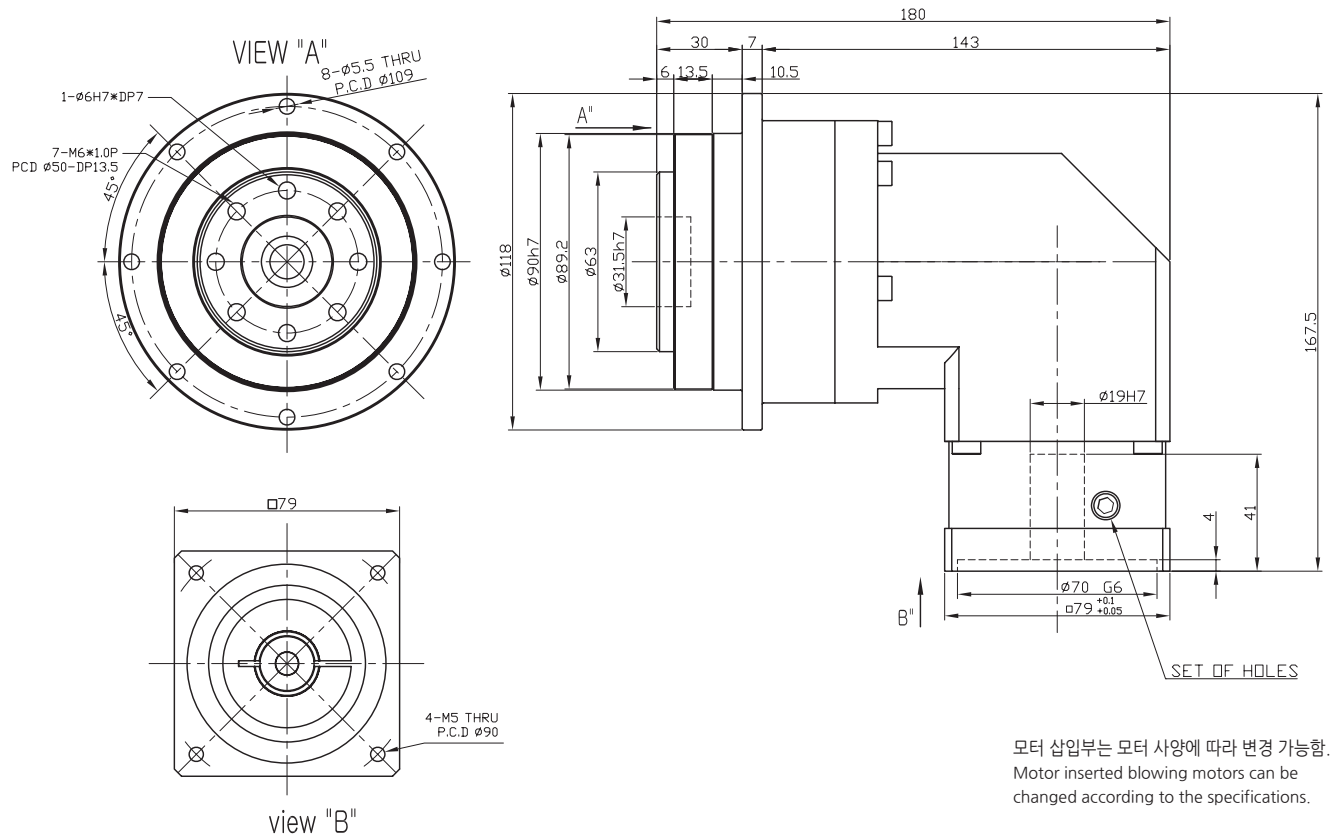
| Outline (□) | Stages | Rtio | Gear combinations | Nominal output torque (Nm) | Maximum output torque (Nm) | Nominal input speed (rpm) | Maximum input speed (rpm) |
|-------------------|-------------------------|------------------------|---|---------------------------------|----------------------------|---------------------------|---------------------------|
| φ 118 | 1 | 3 | 3*1 | 130 | 390 | 3000 | 6000 |
| | | 4 | 4*1 | 165 | 495 | | |
| | | 5 | 5*1 | 140 | 420 | | |
| | | 9 | 9*1 | 130 | 390 | | |
| | 2 | 12 | 3*4 | 165 | 495 | | |
| | | 15 | 3*5 | 140 | 420 | | |
| | | 16 | 4*4 | 165 | 495 | | |
| | | 20 | 4*5 | 165 | 495 | | |
| | | 27 | 3*9 | 130 | 390 | | |
| | | 36 | 4*9 | 165 | 495 | | |
| | | 45 | 5*9 | 140 | 420 | | |
| | | 81 | 9*9 | 100 | 300 | | |
| 무게(Weight) ±3% | 축직각(Radial load) (N) | 축방향(Axial load) (N) | Moment of inertia (kg.m ²) | Backlash (arc min) | 효율(Efficiency) (%) | 수명(Machinical Life) | |
| 3 | 2985 | 1225 | 0.145 | BL1 : 5 min이하 BL2 : 10 min이하 | 92~95 | 20000 hr | |

* 주의 : 위 도표에 표기된 Output torque 수치는 기구특성 안전을 미적용 수치임.

PDR90-80-1,2 Stage

Ratio : 3 ~ 81

Applicable Motor : 750 W



| Outline (□) | Stages | Rtio | Gear combinations | Nominal output torque (Nm) | Maximum output torque (Nm) | Nominal input speed (rpm) | Maximum input speed (rpm) |
|-------------------|-------------------------|------------------------|---|---------------------------------|----------------------------|---------------------------|---------------------------|
| φ 118 | 1 | 3 | 3*1 | 130 | 390 | 3000 | 6000 |
| | | 4 | 4*1 | 165 | 495 | | |
| | | 5 | 5*1 | 140 | 420 | | |
| | | 9 | 9*1 | 130 | 390 | | |
| | 2 | 12 | 3*4 | 165 | 495 | | |
| | | 15 | 3*5 | 140 | 420 | | |
| | | 16 | 4*4 | 165 | 495 | | |
| | | 20 | 4*5 | 165 | 495 | | |
| | | 27 | 3*9 | 130 | 390 | | |
| | | 36 | 4*9 | 165 | 495 | | |
| | | 45 | 5*9 | 140 | 420 | | |
| | | 81 | 9*9 | 100 | 300 | | |
| 무게(Weight) ±3% | 축직각(Radial load) (N) | 축방향(Axial load) (N) | Moment of inertia (kg.m ²) | Backlash (arc min) | 효율(Efficiency) (%) | 수명(Machinical Life) | |
| 3 | 2985 | 1225 | 0.145 | BL1 : 5 min이하 BL2 : 10 min이하 | 92~95 | 20000 hr | |

* 주의 : 위 도표에 표기된 Output torque 수치는 기구특성 안전율 미적용 수치임.