

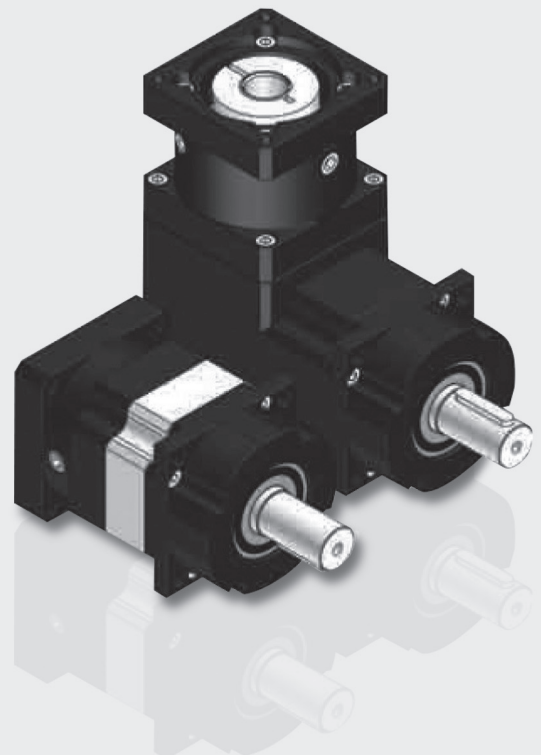
# PF SERIES

PF SERIES

## Planetary Gearboxes High Precision High Speed

---

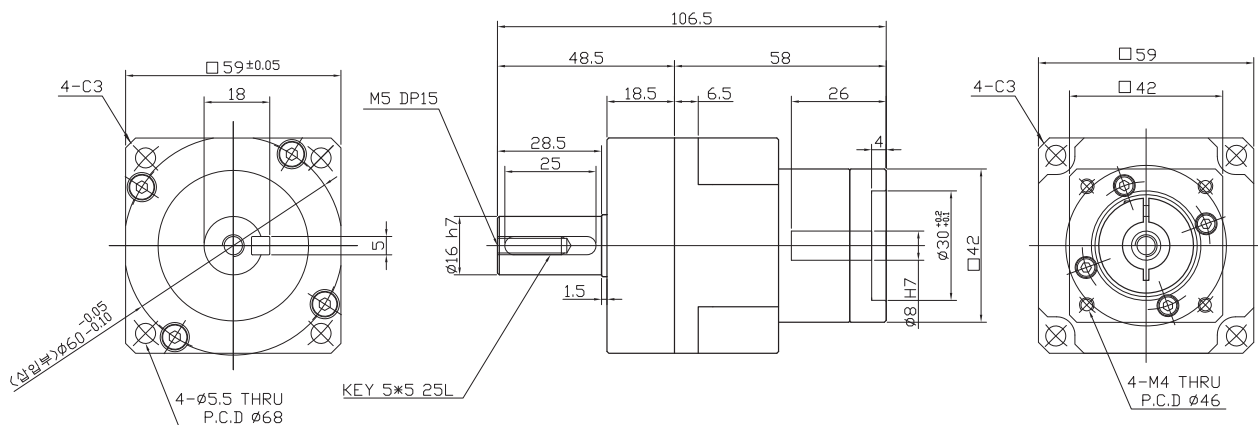
- 고강성, 고토크, 저소음, 구조개선을 통한 경량화 실현
- 오일리크를 방지하기 위하여 입력부의 오일씰 부분 개선
- PAR타입 베벨기어를 적용한 Angle 구조로 공간활용 극대화
- 고강성 하우징 채용으로 어떠한 모터든 대응 가능



# PFS60-42-1 Stage

Ratio : 3, 4, 5, 9

Applicable Motor : 50~100 W



모터 삽입부는 모터 사양에 따라 변경 가능함.  
Motor inserted blowing motors can be changed according to the specifications.

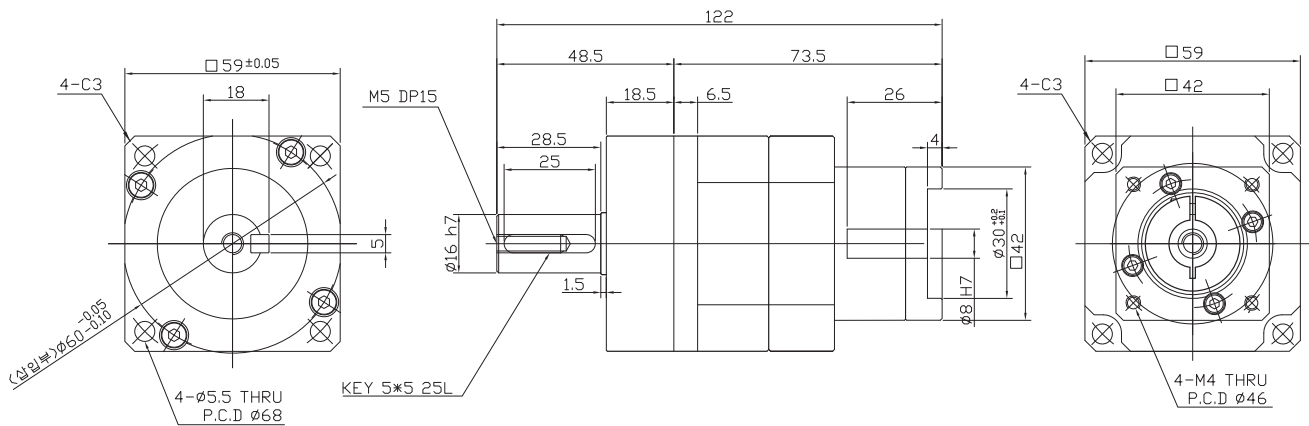
Outline ( □ )	Stages	Rtio	Gear combinations	Nominal output torque (Nm)	Maximum output torque (Nm)	Nominal input speed (rpm)	Maximum input speed (rpm)
59	1	3	3	48	144	3000	6000
		4	4	60	180		
		5	5	42	126		
		9	9	36	108		
무게(Weight) ±3%	축직각(Radial load) (N)	축방향(Axial load) (N)	Moment of inertia (kg.m <sup>2</sup> )	Backlash (arc min)	효율(Efficiency) (%)	수명(Machinical Life)	
1.4	1530	765	0.106	BL1 : 5 min이하 BL2 : 10 min이하	95	20000 hr	

\* 주의 : 위 도표에 표기된 Output torque 수치는 기구특성 안전율 미적용 수치임.

# PFS60-42-1 Stage 10대1

Ratio : 10

Applicable Motor : 50~100 W



모터 삽입부는 모터 사양에 따라 변경 가능함.  
Motor inserted blowing motors can be changed according to the specifications.

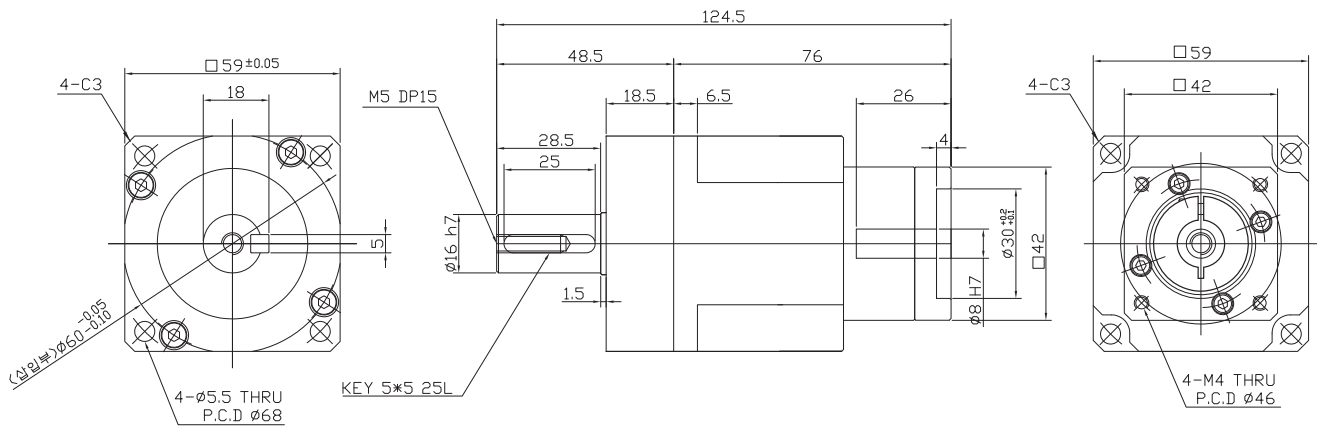
Outline (mm)	Stages	Rtio	Gear combinations	Nominal output torque (Nm)	Maximum output torque (Nm)	Nominal input speed (rpm)	Maximum input speed (rpm)
59	1	10	1*10	38	114	3000	6000
무게(Weight) ±3%	축직각(Radial load) (N)	축방향(Axial load) (N)	Moment of inertia (kg.m <sup>2</sup> )	Backlash (arc min)	효율(Efficiency) (%)	수명(Machinal Life)	
1.4	1530	765	0.106	BL1 : 5 min이하 BL2 : 10 min이하	95	20000 hr	

\* 주의 : 위 도표에 표기된 Output torque 수치는 기구특성 안전을 미적용 수치임.

# PFS60-42-2 Stage

Ratio : 12 ~ 81

Applicable Motor : 50~100 W



모터 삽입부는 모터 사양에 따라 변경 가능함.  
Motor inserted blowing motors can be changed according to the specifications.

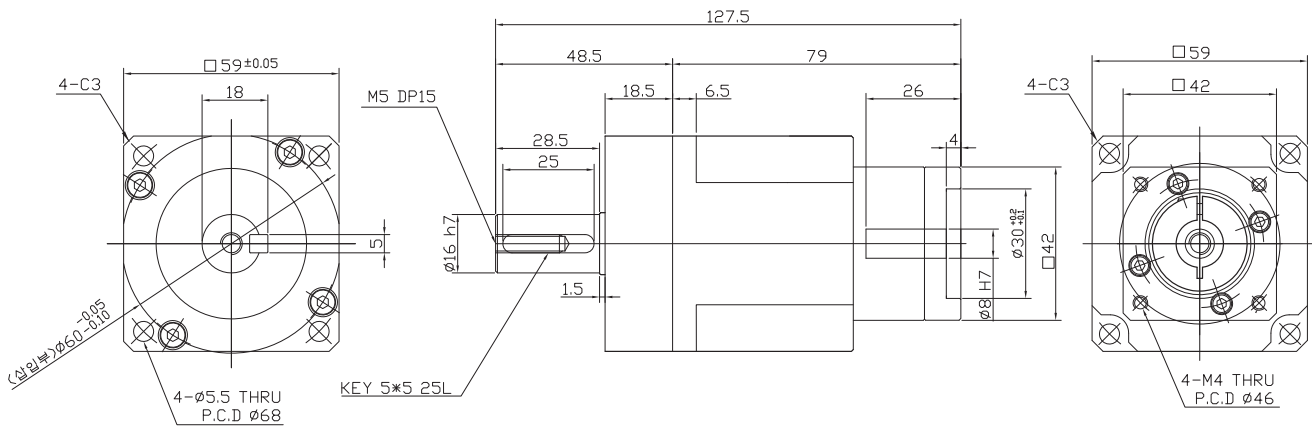
Outline ( □ )	Stages	Rtio	Gear combinations	Nominal output torque (Nm)	Maximum output torque (Nm)	Nominal input speed (rpm)	Maximum input speed (rpm)
60	2	12	3*4	60	180	3000	6000
		15	3*5	48	144		
		16	4*4	60	180		
		20	4*5	60	180		
		25	5*5	42	126		
		27	3*9	48	144		
		36	4*9	60	180		
		45	5*9	42	126		
		81	9*9	36	108		
무게(Weight) ±3%	축직각(Radial load) (N)	축방향(Axial load) (N)	Moment of inertia (kg.m²)	Backlash (arc min)	효율(Efficiency) (%)	수명(Machinal Life)	
1.4	1530	765	0.106	BL1 : 5 min이하 BL2 : 10 min이하	92	20000 hr	

\* 주의 : 위 도표에 표기된 Output torque 수치는 기구특성 안전율 미적용 수치임.

# PFS60-42-2 Stage 10대1

Ratio : 30 ~ 90

Applicable Motor : 50~100 W



모터 삽입부는 모터 사양에 따라 변경 가능함.  
Motor inserted blowing motors can be changed according to the specifications.

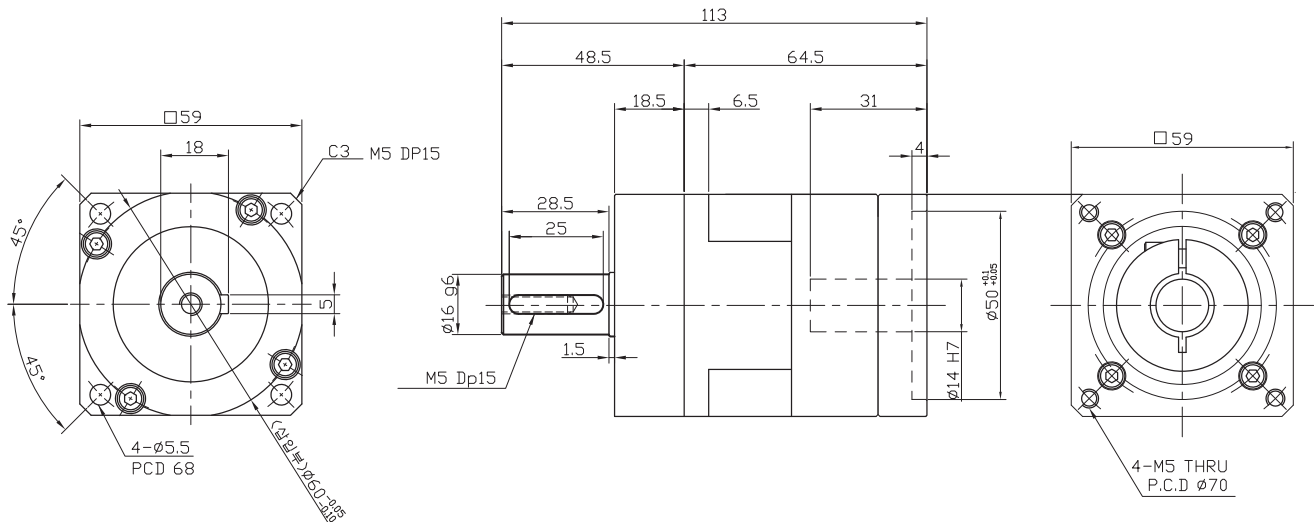
Outline (□)	Stages	Rtio	Gear combinations	Nominal output torque (Nm)	Maximum output torque (Nm)	Nominal input speed (rpm)	Maximum input speed (rpm)
60	2	30	3*10	48	144	3000	6000
		40	4*10	60	180		
		50	5*10	42	126		
		90	9*10	36	108		
무게(Weight) ±3%	축직각(Radial load) (N)	축방향(Axial load) (N)	Moment of inertia (kg.m <sup>2</sup> )	Backlash (arc min)	효율(Efficiency) (%)	수명(Machinical Life)	
1.4	1530	765	0.106	BL1 : 5 min이하 BL2 : 10 min이하	92	20000 hr	

\* 주의 : 위 도표에 표기된 Output torque 수치는 기구특성 안전율 미적용 수치임.

# PFS60-1 Stage

Ratio : 3, 4, 5, 9

Applicable Motor : 200~400 W



모터 삽입부는 모터 사양에 따라 변경 가능함.  
Motor inserted blowing motors can be changed according to the specifications.

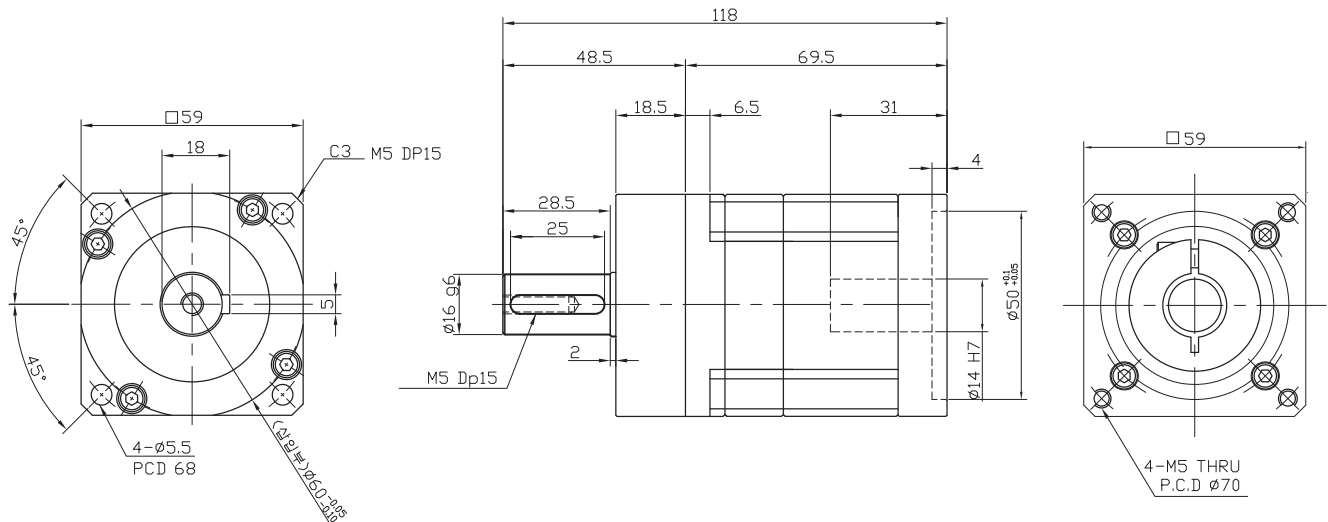
Outline ( □ )	Stages	Rtio	Gear combinations	Nominal output torque (Nm)	Maximum output torque (Nm)	Nominal input speed (rpm)	Maximum input speed (rpm)
60	1	3	3	48	144	3000	6000
		4	4	60	180		
		5	5	42	126		
		9	9	36	108		
무게(Weight) ±3%	축직각(Radial load) (N)	축방향(Axial load) (N)	Moment of inertia (kg.m <sup>2</sup> )	Backlash (arc min)	효율(Efficiency) (%)	수명(Machinical Life)	
1.4	1530	765	0.106	BL1 : 5 min이하 BL2 : 10 min이하	95	20000 hr	

\* 주의 : 위 도표에 표기된 Output torque 수치는 기구특성 안전율 미적용 수치임.

# PFS60-1 Stage 10대1

Ratio : 10

Applicable Motor : 200~400 W



모터 삽입부는 모터 사양에 따라 변경 가능함.  
Motor inserted blowing motors can be changed according to the specifications.

Outline (□)	Stages	Rtio	Gear combinations	Nominal output torque (Nm)	Maximum output torque (Nm)	Nominal input speed (rpm)	Maximum input speed (rpm)
60	1	10	1*10	38	114	3000	6000
무게(Weight) ±3%	축직각(Radial load) (N)	축방향(Axial load) (N)	Moment of inertia (kg.m <sup>2</sup> )	Backlash (arc min)	효율(Efficiency) (%)	수명(Machinal Life)	
1.4	1530	765	0.106	BL1 : 5 min이하 BL2 : 10 min이하	95	20000 hr	

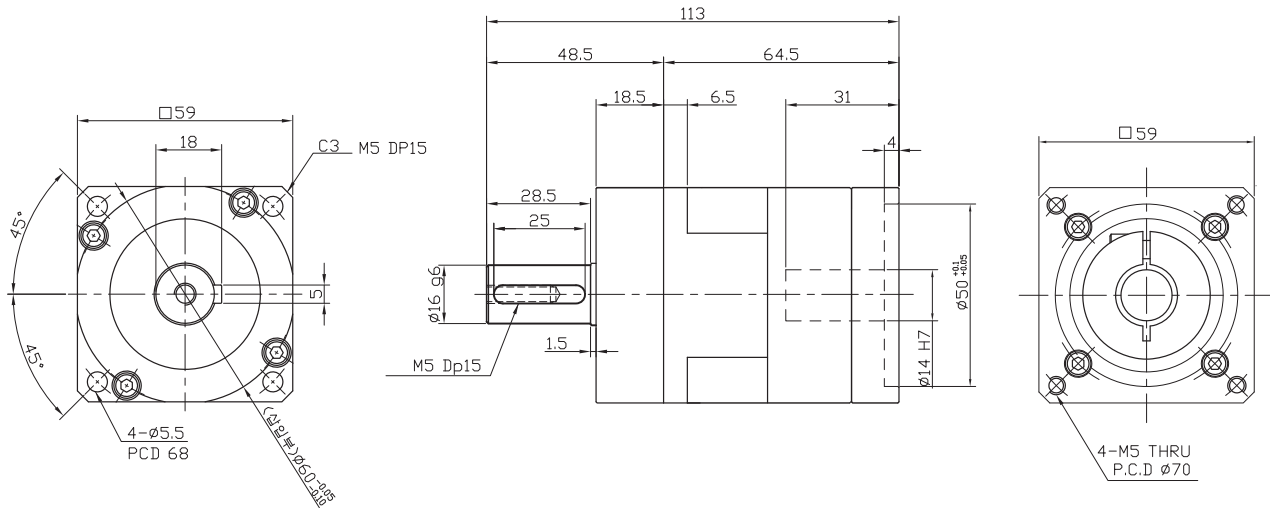
\* 주의 : 위 도표에 표기된 Output torque 수치는 기구특성 안전을 미적용 수치임.



# PFS60-2 Stage

Ratio : 12 ~ 81

Applicable Motor : 200~400 W



모터 삽입부는 모터 사양에 따라 변경 가능함.  
Motor inserted blowing motors can be changed according to the specifications.

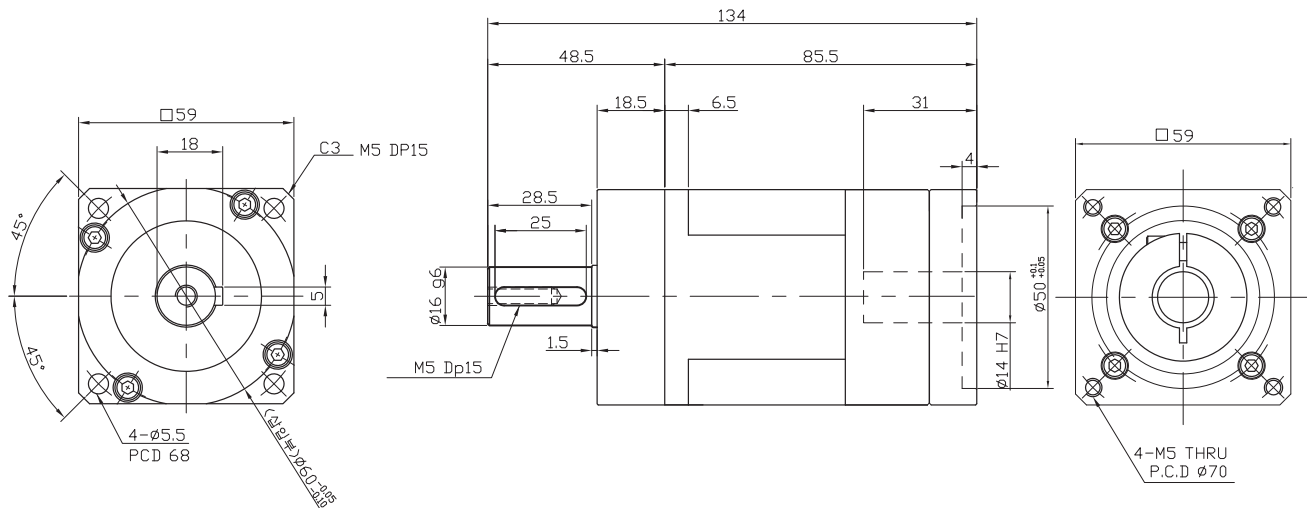
Outline ( □ )	Stages	Rtio	Gear combinations	Nominal output torque (Nm)	Maximum output torque (Nm)	Nominal input speed (rpm)	Maximum input speed (rpm)
60	2	12	3*4	60	180	3000	6000
		15	3*5	48	144		
		16	4*4	60	180		
		20	4*5	60	180		
		25	5*5	42	126		
		27	3*9	48	144		
		36	4*9	60	180		
		45	5*9	42	126		
		81	9*9	36	108		
무게(Weight) ±3%	축직각(Radial load) (N)	축방향(Axial load) (N)	Moment of inertia (kg.m <sup>2</sup> )	Backlash (arc min)	효율(Efficiency) (%)	수명(Machinical Life)	
1.4	1530	765	0.106	BL1 : 5 min이하 BL2 : 10 min이하	92	20000 hr	

\* 주의 : 위 도표에 표기된 Output torque 수치는 기구특성 안전율 미적용 수치임.

# PFS60-2 Stage 10대1

Ratio : 30 ~ 90

Applicable Motor : 200~400 W



모터 삽입부는 모터 사양에 따라 변경 가능함.  
Motor inserted blowing motors can be changed according to the specifications.

Outline ( □ )	Stages	Rtio	Gear combinations	Nominal output torque (Nm)	Maximum output torque (Nm)	Nominal input speed (rpm)	Maximum input speed (rpm)
60	2	30	3*10	48	144	3000	6000
		40	4*10	60	180		
		50	5*10	42	126		
		90	9*10	36	108		
무게(Weight) ±3%	축직각(Radial load) (N)	축방향(Axial load) (N)	Moment of inertia (kg.m <sup>2</sup> )	Backlash (arc min)	효율(Efficiency) (%)	수명(Machinical Life)	
1.4	1530	765	0.106	BL1 : 5 min이하 BL2 : 10 min이하	92	20000 hr	

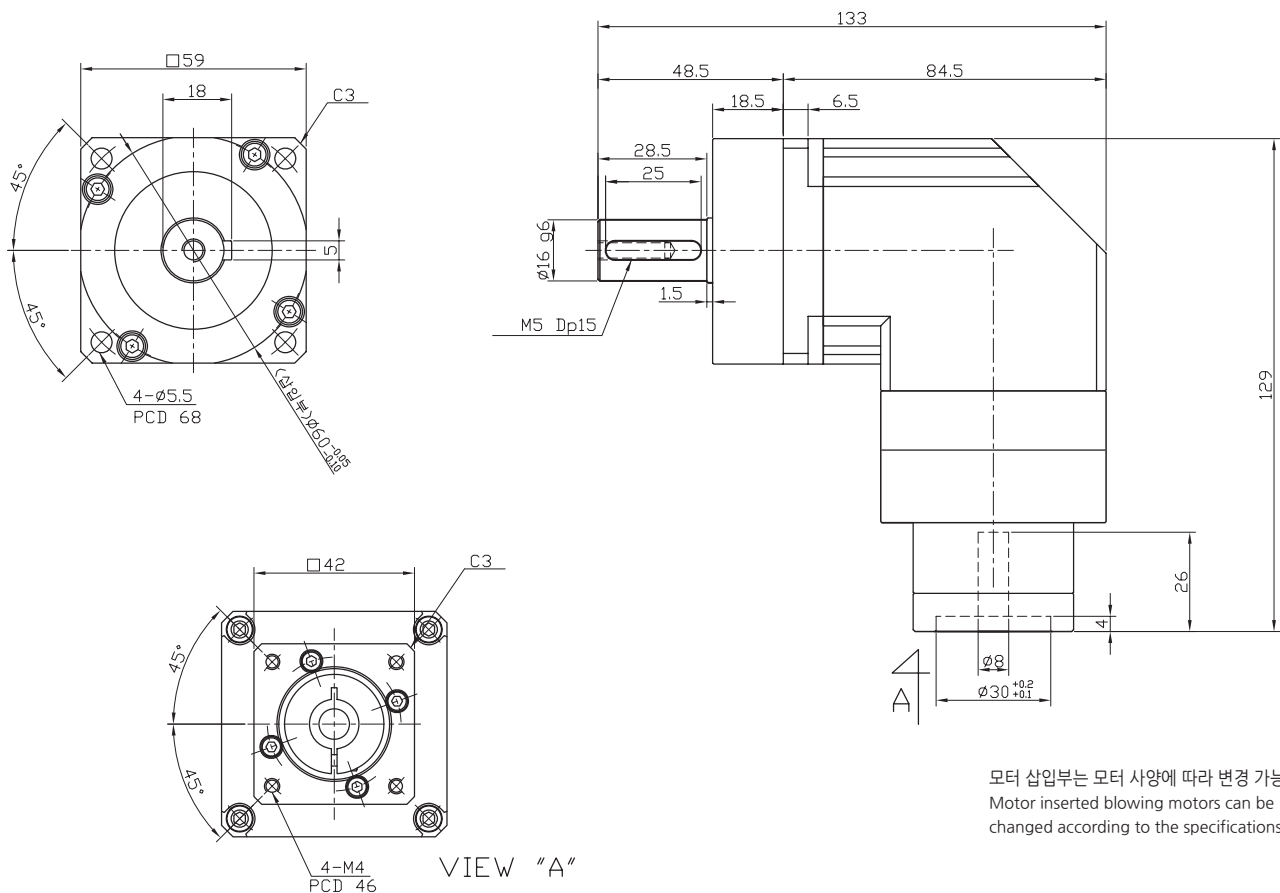
\* 주의 : 위 도표에 표기된 Output torque 수치는 기구특성 안전율 미적용 수치임.



# PFR60-42-1,2 Stage 10대1

Ratio : 10~90

Applicable Motor : 50~100 W



모터 삽입부는 모터 사양에 따라 변경 가능함.  
Motor inserted blowing motors can be changed according to the specifications.

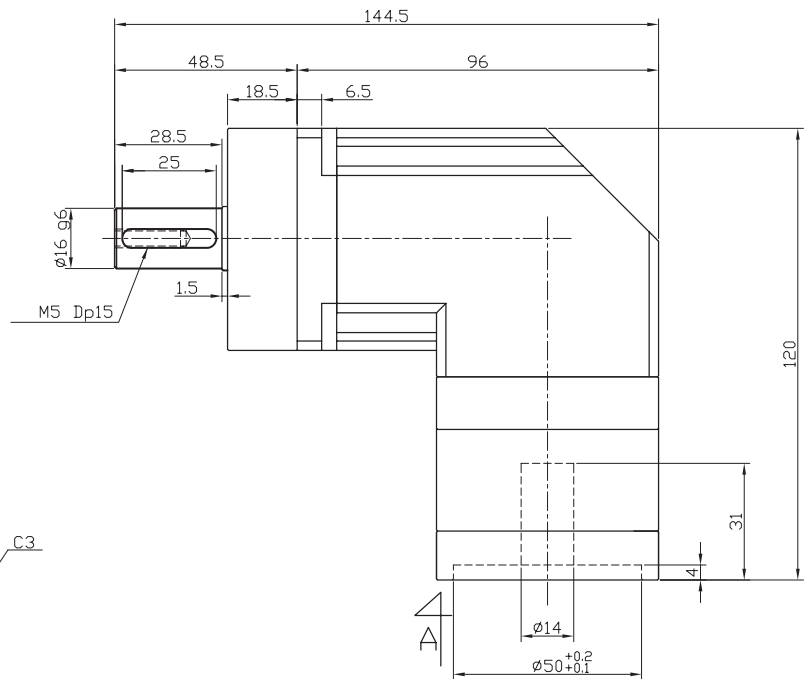
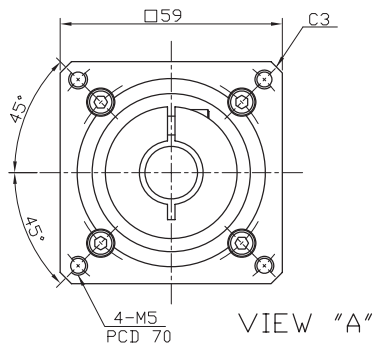
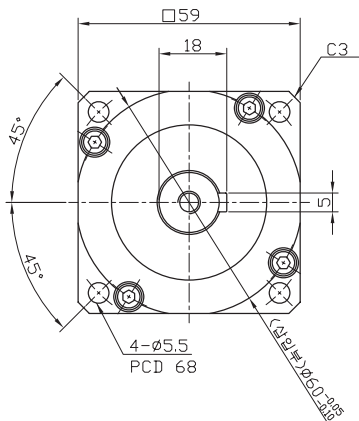
Outline ( □ )	Stages	Rtio	Gear combinations	Nominal output torque (Nm)	Maximum output torque (Nm)	Nominal input speed (rpm)	Maximum input speed (rpm)
60	1	10	1*10	38	114	3000	6000
	2	30	3*10	48	144		
		40	4*10	60	180		
		50	5*10	42	126		
		90	9*10	36	108		
무게(Weight) ±3%	축직각(Radial load) (N)	축방향(Axial load) (N)	Moment of inertia (kg.m <sup>2</sup> )	Backlash (arc min)	효율(Efficiency) (%)	수명(Machinal Life)	
1.4	1530	765	0.106	BL1 : 5 min이하 BL2 : 10 min이하	92	20000 hr	

\* 주의 : 위 도표에 표기된 Output torque 수치는 기구특성 안전을 미적용 수치임.

# PFR60-1,2 Stage

Ratio : 3 ~ 81

Applicable Motor : 200~400 W



모터 삽입부는 모터 사양에 따라 변경 가능함.  
Motor inserted blowing motors can be changed according to the specifications.

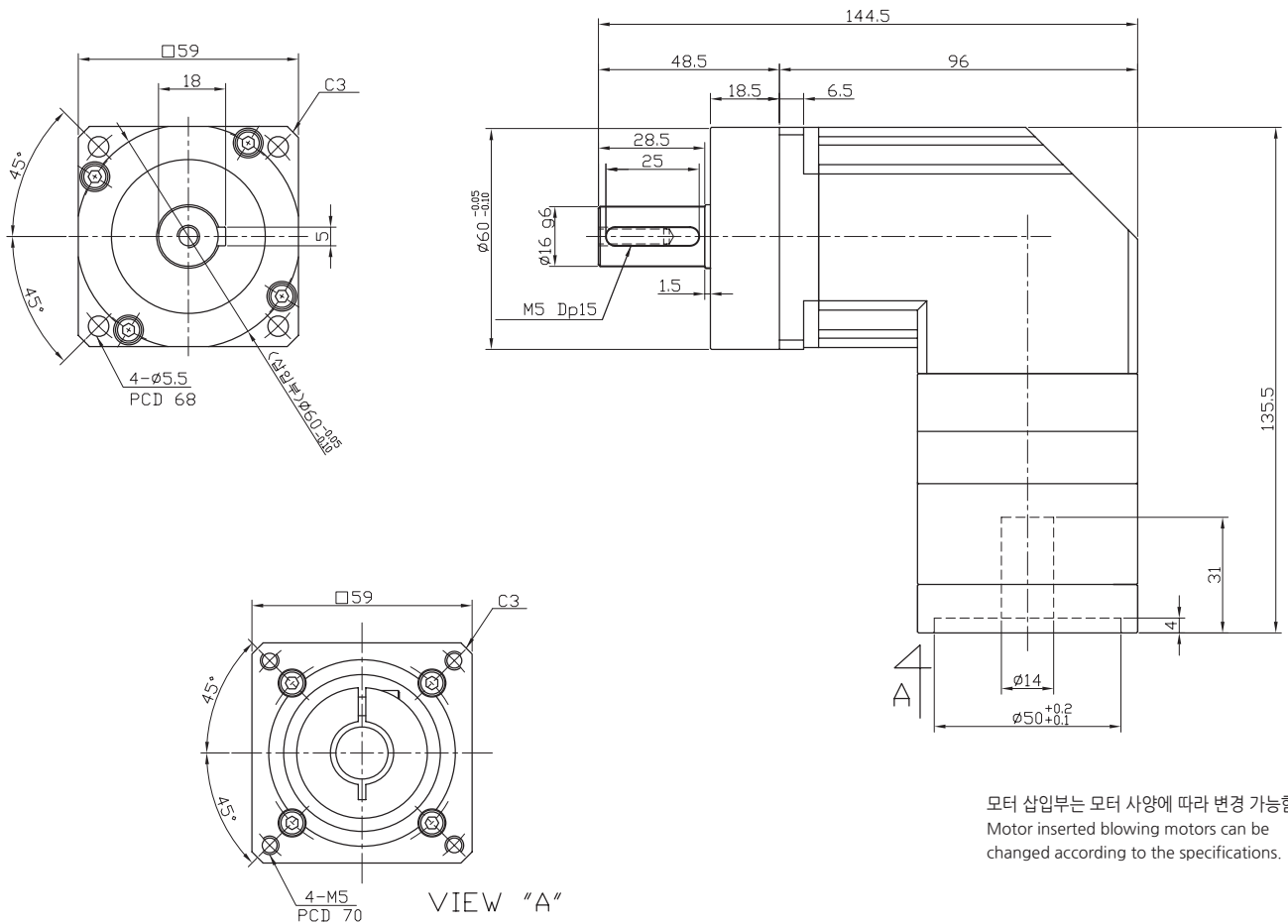
Outline (□)	Stages	Rtio	Gear combinations	Nominal output torque (Nm)	Maximum output torque (Nm)	Nominal input speed (rpm)	Maximum input speed (rpm)
60	1	3	3	48	144	3000	6000
		4	4	60	180		
		5	5	42	126		
		9	9	36	108		
	2	12	3*4	48	144		
		15	3*5	48	144		
		16	4*4	60	180		
		20	4*5	60	180		
		25	5*5	42	126		
		27	3*9	48	144		
		36	4*9	60	180		
		45	5*9	42	126		
	81	9*9	36	108			
무게(Weight) ±3%	축직각(Radial load) (N)	축방향(Axial load) (N)	Moment of inertia (kg.m <sup>2</sup> )	Backlash (arc min)	효율(Efficiency) (%)	수명(Machinical Life)	
1.4	1530	765	0.106	BL1 : 5 min이하 BL2 : 10 min이하	92	20000 hr	

\* 주의 : 위 도표에 표기된 Output torque 수치는 기구특성 안전율 미적용 수치임.

# PFR60-1,2 Stage 10대1

Ratio : 10 ~ 90

Applicable Motor : 200~400 W



Outline ( □ )	Stages	Rtio	Gear combinations	Nominal output torque (Nm)	Maximum output torque (Nm)	Nominal input speed (rpm)	Maximum input speed (rpm)
60	1	10	1*10	38	57	3000	6000
	2	30	3*10	48	144		
		40	4*10	60	180		
		50	5*10	42	126		
		90	9*10	36	108		
무게(Weight) ±3%	축직각(Radial load) (N)	축방향(Axial load) (N)	Moment of inertia (kg.m <sup>2</sup> )	Backlash (arc min)	효율(Efficiency) (%)	수명(Machinical Life)	
1.4	1530	765	0.106	BL1 : 5 min이하 BL2 : 10 min이하	92	20000 hr	

\* 주의 : 위 도표에 표기된 Output torque 수치는 기구특성 안전을 미적용 수치임.