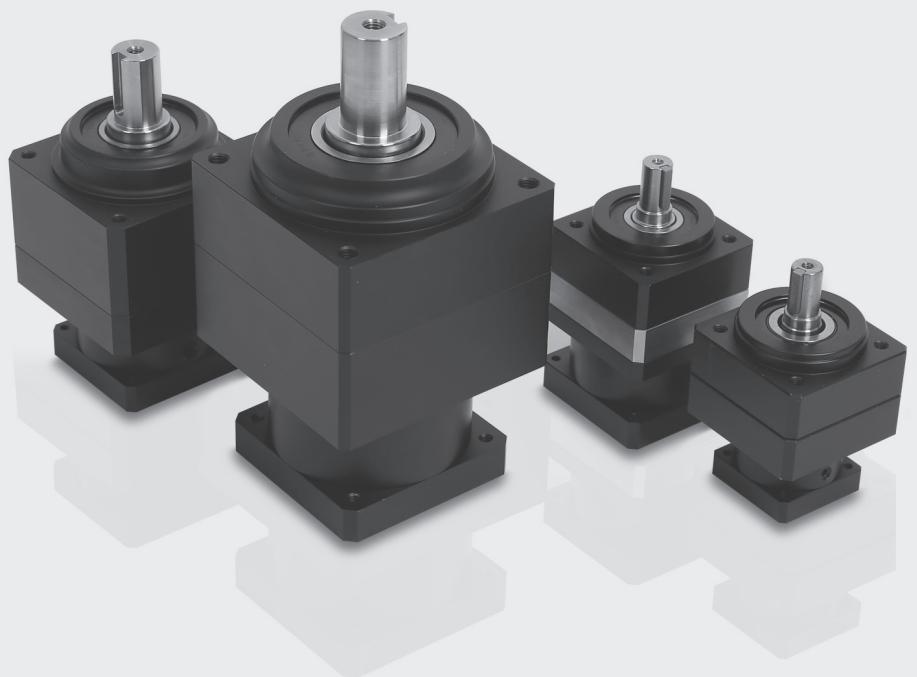


PB SERIES

PB SERIES

Planetary Gearboxes High Precision High Speed

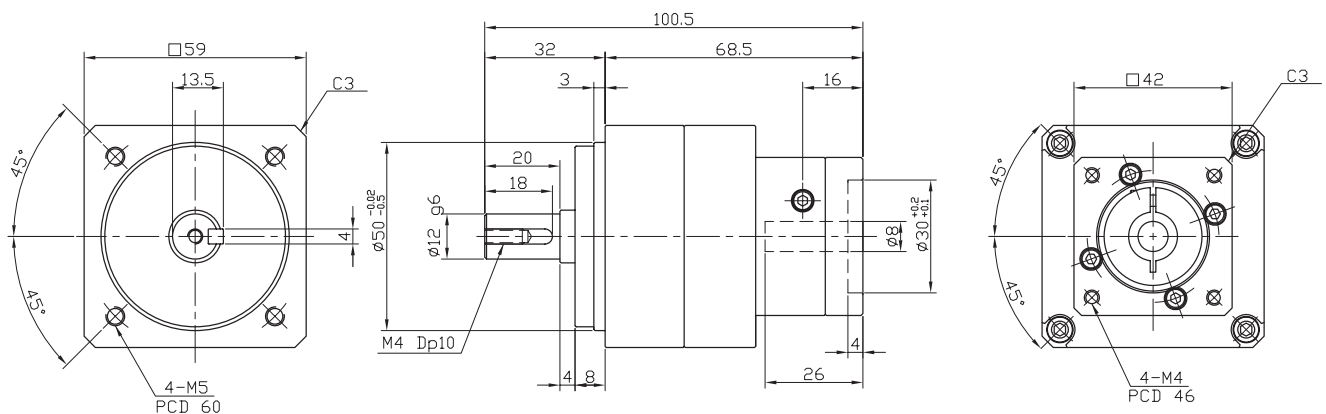
- 고강성, 고토크, 저소음, 구조개선을 통한 경량화 실현
- 오일리크를 방지하기 위하여 입력부의 오일씰 부분 개선
- PAR타입 베벨기어를 적용한 Angle 구조로 공간활용 극대화
- 고강성 하우징 채용으로 어떠한 모터든 대응 가능



PBS60-42-1 Stage

Ratio : 3, 4, 5, 9

Applicable Motor : 50~100 W



모터 삽입부는 모터 사양에 따라 변경 가능함.
Motor inserted blowing motors can be changed according to the specifications.

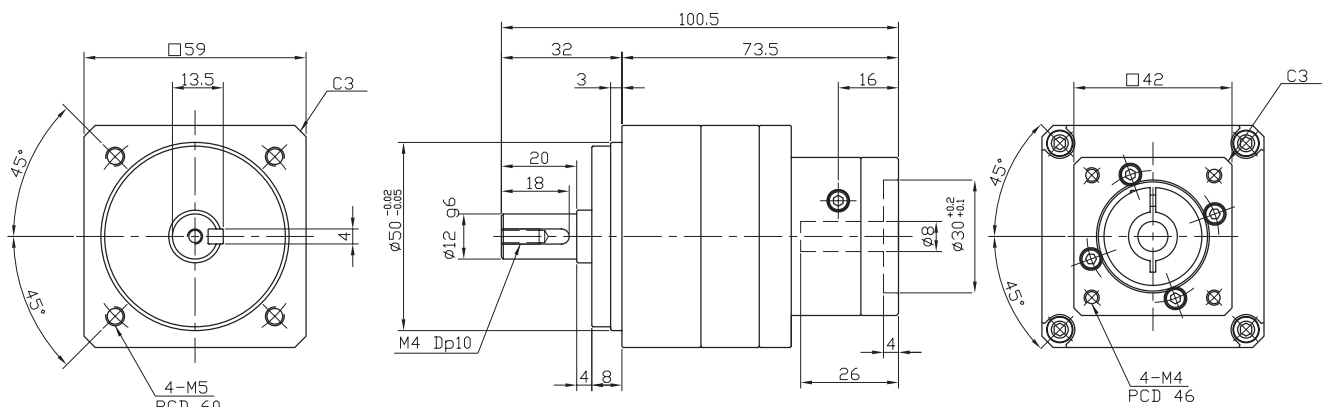
Outline (□)	Stages	Rtio	Gear combinations	Nominal output torque (Nm)	Maximum output torque (Nm)	Nominal input speed (rpm)	Maximum input speed (rpm)
59	1	3	3	48	144	3000	6000
		4	4	60	180		
		5	5	42	126		
		9	9	36	108		
무게(Weight) ±3%	축직각(Radial load) (N)	축방향(Axial load) (N)	Moment of inertia (kg.m ²)	Backlash (arc min)	효율(Efficiency) (%)	수명(Machinical Life)	
0.9	955	515	0.016	BL1 : 5 min이하 BL2 : 10 min이하	95	20000 hr	

* 주의 : 위 도표에 표기된 Output torque 수치는 기구특성 안전율 미적용 수치임.

PBS60-42-1 Stage 10대1

Ratio : 10

Applicable Motor : 50~100 W



모터 삽입부는 모터 사양에 따라 변경 가능함.
Motor inserted blowing motors can be changed according to the specifications.

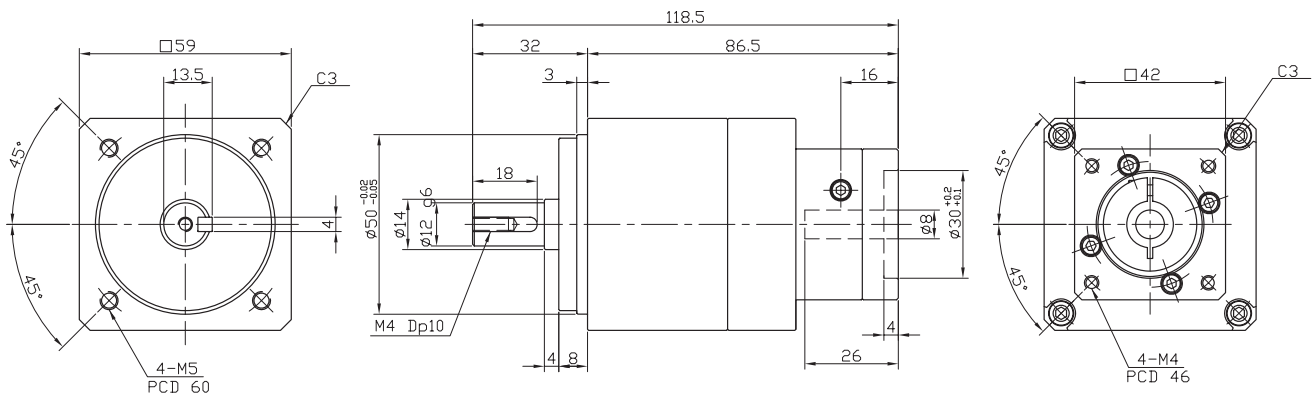
Outline (□)	Stages	Rtio	Gear combinations	Nominal output torque (Nm)	Maximum output torque (Nm)	Nominal input speed (rpm)	Maximum input speed (rpm)
59	1	10	1*10	36	108	3000	6000
무게(Weight) ±3%	축직각(Radial load) (N)	축방향(Axial load) (N)	Moment of inertia (kg.m ²)	Backlash (arc min)	효율(Efficiency) (%)	수명(Machinal Life)	
0.9	955	515	0.106	BL1 : 5 min이하 BL2 : 10 min이하	95	20000 hr	

* 주의 : 위 도표에 표기된 Output torque 수치는 기구특성 안전을 미적용 수치임.

PBS60-42-2 Stage

Ratio : 12 ~ 81

Applicable Motor : 50~100 W



모터 삽입부는 모터 사양에 따라 변경 가능함.
Motor inserted blowing motors can be changed according to the specifications.

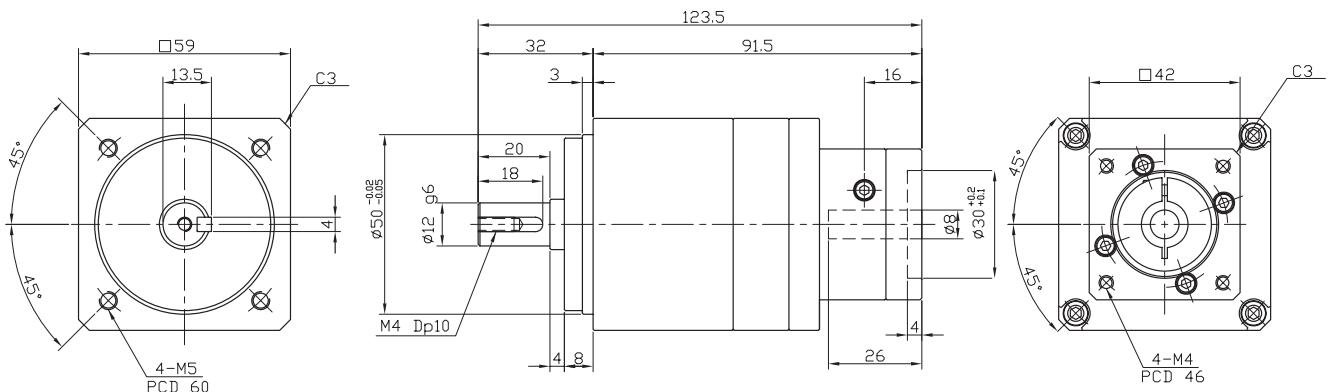
Outline (□)	Stages	Rtio	Gear combinations	Nominal output torque (Nm)	Maximum output torque (Nm)	Nominal input speed (rpm)	Maximum input speed (rpm)
59	2	12	3*4	60	180	3000	6000
		15	3*5	48	144		
		16	4*4	60	180		
		20	4*5	60	180		
		25	5*5	42	126		
		27	3*9	48	144		
		36	4*9	60	180		
		45	5*9	42	126		
81	9*9	36	108				
무게(Weight) ±3%	축직각(Radial load) (N)	축방향(Axial load) (N)	Moment of inertia (kg.m ²)	Backlash (arc min)	효율(Efficiency) (%)	수명(Machinical Life)	
1.2	955	515	0.033~0.04	BL1 : 5 min이하 BL2 : 10 min이하	92	20000 hr	

* 주의 : 위 도표에 표기된 Output torque 수치는 기구특성 안전율 미적용 수치임.

PBS60-42-2 Stage 10대1

Ratio : 30 ~ 90

Applicable Motor : 50~100 W



모터 삽입부는 모터 사양에 따라 변경 가능함.
Motor inserted blowing motors can be changed according to the specifications.

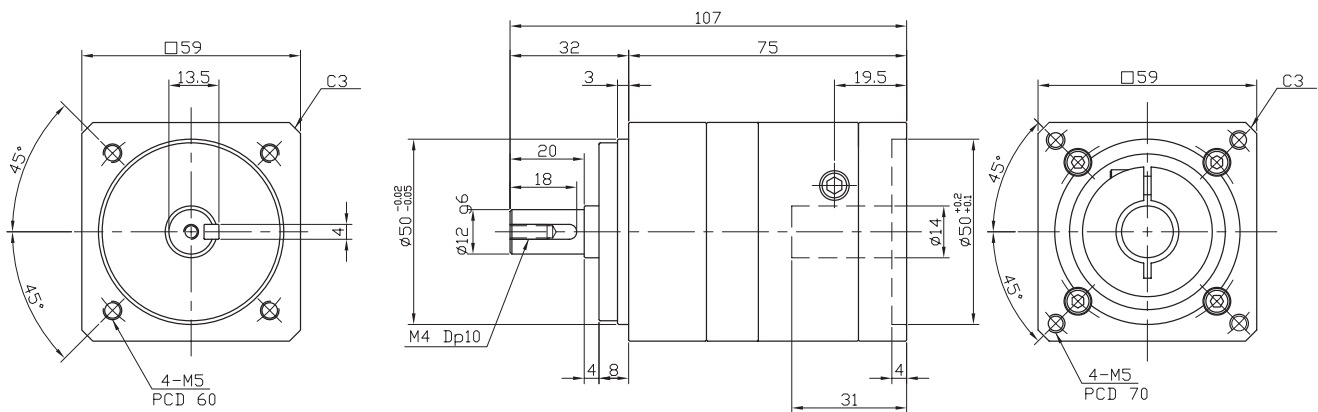
Outline (□)	Stages	Rtio	Gear combinations	Nominal output torque (Nm)	Maximum output torque (Nm)	Nominal input speed (rpm)	Maximum input speed (rpm)
59	2	30	3*10	48	144	3000	6000
		40	4*10	60	180		
		50	5*10	42	126		
		90	9*10	36	108		
무게(Weight) ±3%	축직각(Radial load) (N)	축방향(Axial load) (N)	Moment of inertia (kg.m ²)	Backlash (arc min)	효율(Efficiency) (%)	수명(Machinal Life)	
1.2	955	515	0.035	BL1 : 5 min이하 BL2 : 10 min이하	92	20000 hr	

* 주의 : 위 도표에 표기된 Output torque 수치는 기구특성 안전율 미적용 수치임.

PBS60-1 Stage

Ratio : 3, 4, 5, 9

Applicable Motor : 200~400 W



모터 삽입부는 모터 사양에 따라 변경 가능함.
Motor inserted blowing motors can be changed according to the specifications.

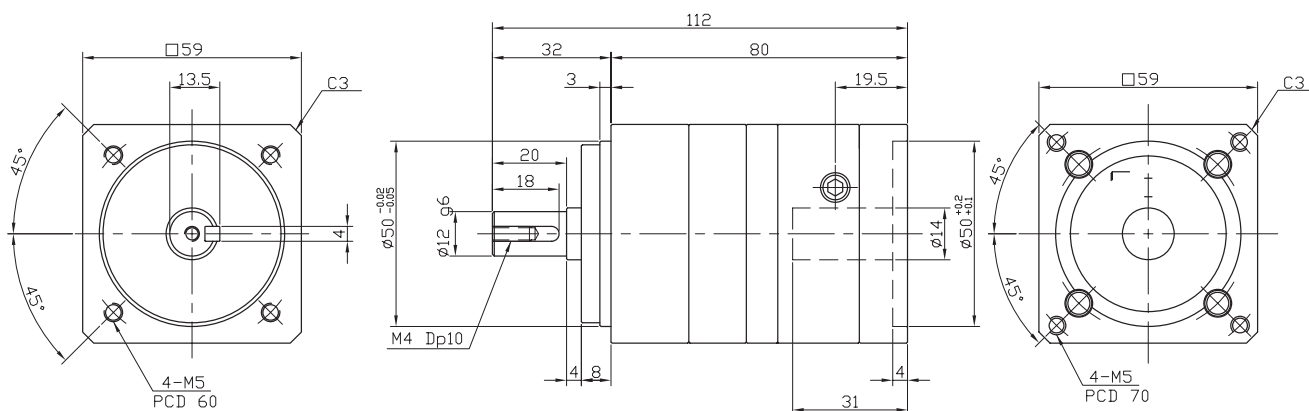
Outline (□)	Stages	Rtio	Gear combinations	Nominal output torque (Nm)	Maximum output torque (Nm)	Nominal input speed (rpm)	Maximum input speed (rpm)
59	1	3	3	48	144	3000	6000
		4	4	60	180		
		5	5	42	126		
		9	9	36	108		
무게(Weight) ±3%	축직각(Radial load) (N)	축방향(Axial load) (N)	Moment of inertia (kg.m ²)	Backlash (arc min)	효율(Efficiency) (%)	수명(Machinical Life)	
1	955	515	0.106~0.145	BL1 : 5 min이하 BL2 : 10 min이하	95	20000 hr	

* 주의 : 위 도표에 표기된 Output torque 수치는 기구특성 안전을 미적용 수치임.

PBS60-1 Stage 10대1

Ratio : 10

Applicable Motor : 200~400 W



모터 삽입부는 모터 사양에 따라 변경 가능함.
Motor inserted blowing motors can be changed according to the specifications.

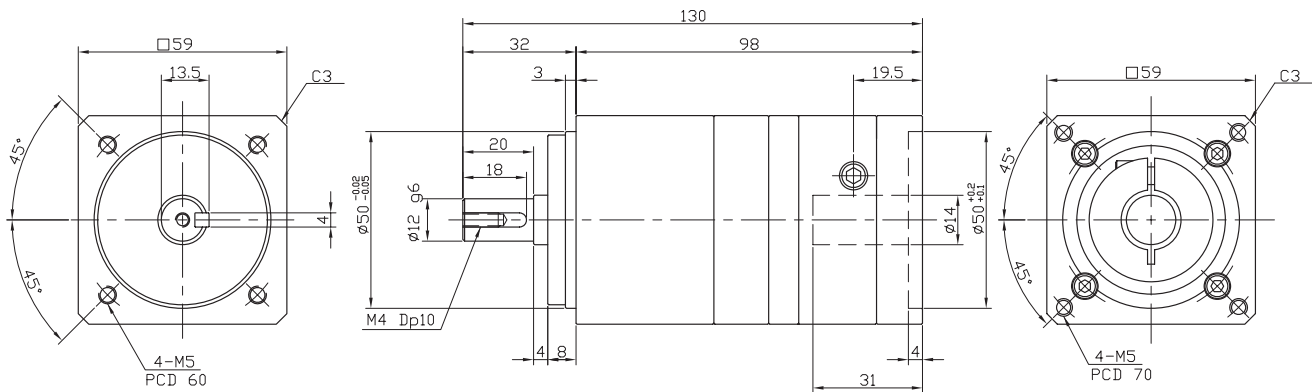
Outline (□)	Stages	Rtio	Gear combinations	Nominal output torque (Nm)	Maximum output torque (Nm)	Nominal input speed (rpm)	Maximum input speed (rpm)
59	1	10	1*10	38	114	3000	6000
무게(Weight) ±3%	축직각(Radial load) (N)	축방향(Axial load) (N)	Moment of inertia (kg.m ²)	Backlash (arc min)	효율(Efficiency) (%)	수명(Machinal Life)	
1	955	515	0.106	BL1 : 5 min이하 BL2 : 10 min이하	95	20000 hr	

* 주의 : 위 도표에 표기된 Output torque 수치는 기구특성 안전을 미적용 수치임.

PBS60-2 Stage 10대1

Ratio : 30 ~ 90

Applicable Motor : 200~400 W



모터 삽입부는 모터 사양에 따라 변경 가능함.
Motor inserted blowing motors can be changed according to the specifications.

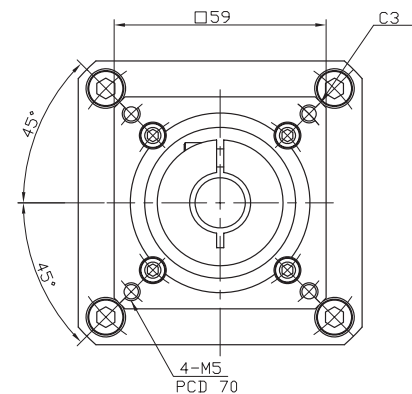
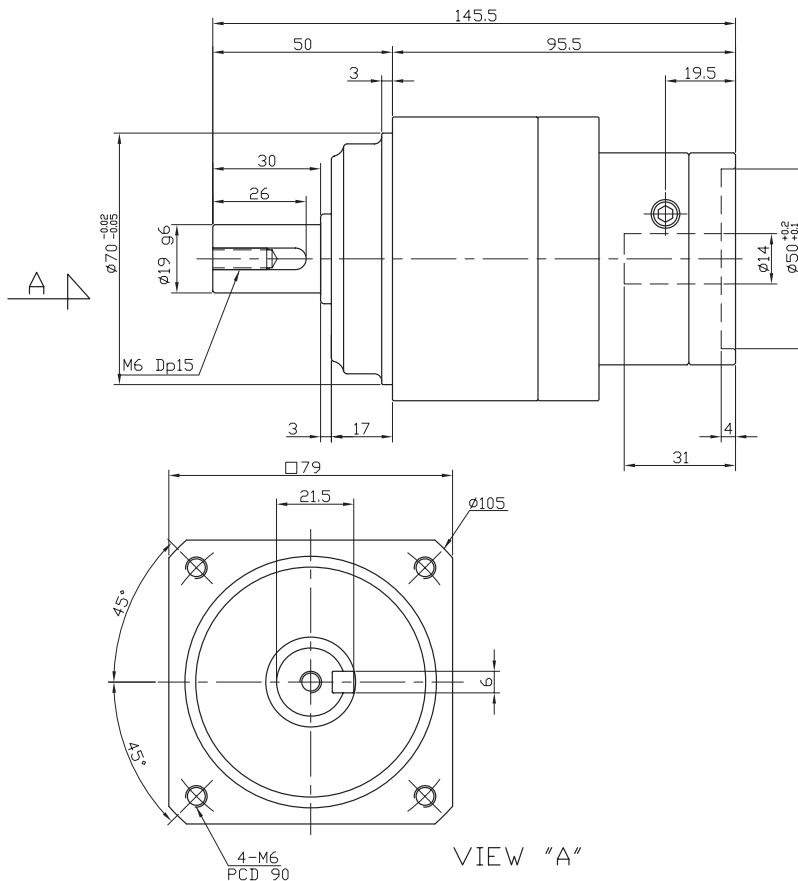
Outline (□)	Stages	Rtio	Gear combinations	Nominal output torque (Nm)	Maximum output torque (Nm)	Nominal input speed (rpm)	Maximum input speed (rpm)
59	2	30	3*10	48	144	3000	6000
		40	4*10	60	180		
		50	5*10	42	126		
		90	9*10	36	108		
무게(Weight) ±3%	축직각(Radial load) (N)	축방향(Axial load) (N)	Moment of inertia (kg.m ²)	Backlash (arc min)	효율(Efficiency) (%)	수명(Machinical Life)	
1.3	955	515	0.106	BL1 : 5 min이하 BL2 : 10 min이하	92	20000 hr	

* 주의 : 위 도표에 표기된 Output torque 수치는 기구특성 안전율 미적용 수치임.

PBS80-60-2 Stage

Ratio : 12 ~ 81

Applicable Motor : 200~500 W



모터 삽입부는 모터 사양에 따라 변경 가능함.
Motor inserted blowing motors can be changed according to the specifications.

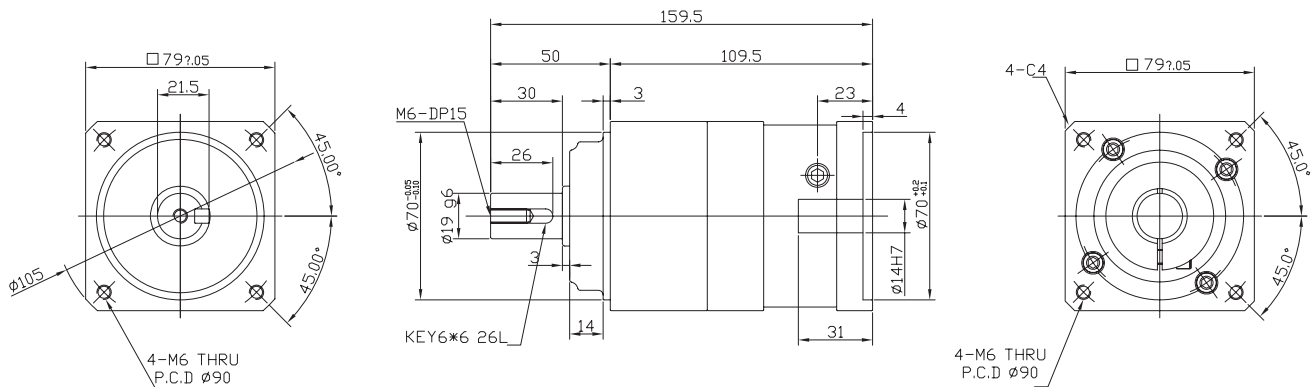
Outline (mm)	Stages	Rtio	Gear combinations	Nominal output torque (Nm)	Maximum output torque (Nm)	Nominal input speed (rpm)	Maximum input speed (rpm)
79	2	12	3*4	79.5	238.5	3000	6000
		15	3*5	79.5	238.5		
		16	4*4	75	225		
		20	4*5	75	225		
		25	5*5	82.5	247.5		
		27	3*9	79.5	238.5		
		36	4*9	75	225		
		45	5*9	82.5	247.5		
		81	9*9	63	189		
무게(Weight) ±3%	축직각(Radial load) (N)	축방향(Axial load) (N)	Moment of inertia (kg.m ²)	Backlash (arc min)	효율(Efficiency) (%)	수명(Machinical Life)	
2	1430	800	0.106~0.13	BL1 : 5 min이하 BL2 : 10 min이하	92	20000 hr	

* 주의 : 위 도표에 표기된 Output torque 수치는 기구특성 안전율 미적용 수치임.

PBS80-2 Stage

Ratio : 12 ~ 81

Applicable Motor : 400 ~ 600 W



모터 삽입부는 모터 사양에 따라 변경 가능함.
Motor inserted blowing motors can be changed according to the specifications.

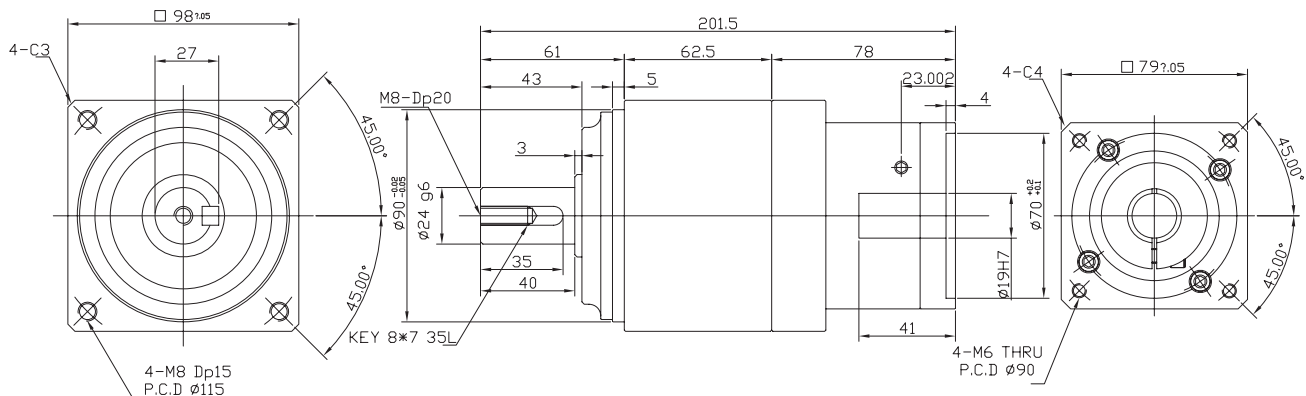
Outline (□)	Stages	Rtio	Gear combinations	Nominal output torque (Nm)	Maximum output torque (Nm)	Nominal input speed (rpm)	Maximum input speed (rpm)
79	2	12	3*4	79.5	238.5	3000	6000
		15	3*5	79.5	238.5		
		16	4*4	75	225		
		20	4*5	75	225		
		25	5*5	82.5	247.5		
		27	3*9	79.5	238.5		
		36	4*9	75	225		
		45	5*9	82.5	247.5		
81	9*9	63	189				
무게(Weight) ±3%	축직각(Radial load) (N)	축방향(Axial load) (N)	Moment of inertia (kg.m ²)	Backlash (arc min)	효율(Efficiency) (%)	수명(Machinal Life)	
2.2	1430	800	0.422~0.736	BL1 : 5 min이하 BL2 : 10 min이하	92	20000 hr	

* 주의 : 위 도표에 표기된 Output torque 수치는 기구특성 안전율 미적용 수치임.

PBS100-80-2 Stage

Ratio : 12 ~ 81

Applicable Motor : 750 W



모터 삽입부는 모터 사양에 따라 변경 가능함.
Motor inserted blowing motors can be changed according to the specifications.

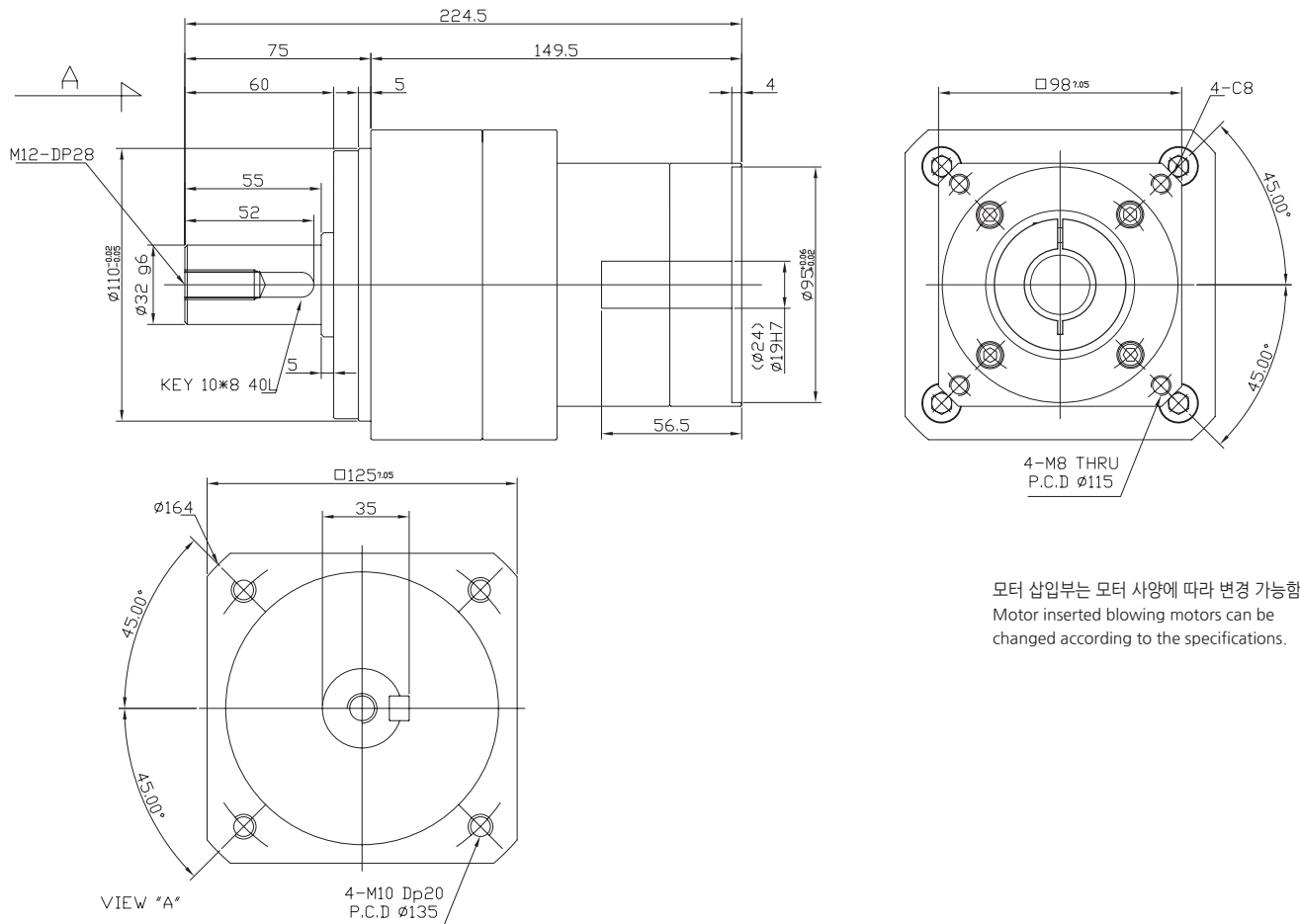
Outline (□)	Stages	Rtio	Gear combinations	Nominal output torque (Nm)	Maximum output torque (Nm)	Nominal input speed (rpm)	Maximum input speed (rpm)
98	2	12	3*4	165	495	3000	6000
		15	3*5	156	468		
		16	4*4	165	495		
		20	4*5	165	495		
		25	5*5	195	585		
		27	3*9	156	468		
		36	4*9	165	495		
		45	5*9	195	585		
		81	9*9	120	360		
무게(Weight) ±3%	축직각(Radial load) (N)	축방향(Axial load) (N)	Moment of inertia (kg.m ²)	Backlash (arc min)	효율(Efficiency) (%)	수명(Machinal Life)	
4	2620	1560	0.883~1.039	BL1 : 5 min이하 BL2 : 10 min이하	92	20000 hr	

* 주의 : 위 도표에 표기된 Output torque 수치는 기구특성 안전율 미적용 수치임.

PBS125-100-1 Stage

Ratio : 3, 4, 5, 9

Applicable Motor : 1000~2000 W



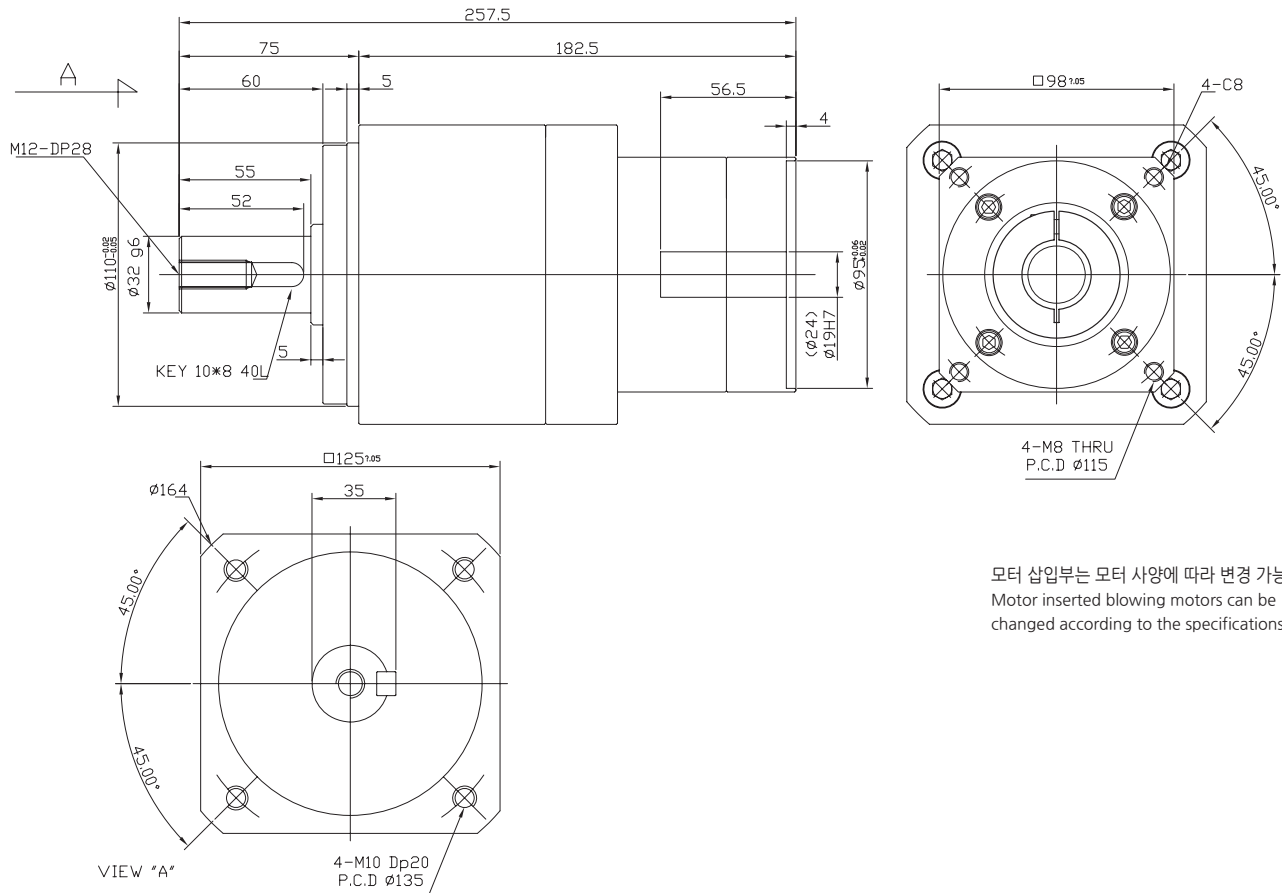
Outline (㉔)	Stages	Rtio	Gear combinations	Nominal output torque (Nm)	Maximum output torque (Nm)	Nominal input speed (rpm)	Maximum input speed (rpm)
125	1	3	3	249	747	3000	6000
		4	4	301.6	904.8		
		5	5	343.2	1029.6		
		9	9	200	600		
무게(Weight) ±3%	축직각(Radial load) (N)	축방향(Axial load) (N)	Moment of inertia (kg.m²)	Backlash (arc min)	효율(Efficiency) (%)	수명(Machinal Life)	
9	3350	2080	1.055~4.054	BL1 : 5 min이하 BL2 : 10 min이하	95	20000 hr	

* 주의 : 위 도표에 표기된 Output torque 수치는 기구특성 안전을 미적용 수치임.

PBS125-100-2 Stage

Ratio : 12 ~ 81

Applicable Motor : 1000~2000 W



모터 삽입부는 모터 사양에 따라 변경 가능함.
Motor inserted blowing motors can be changed according to the specifications.

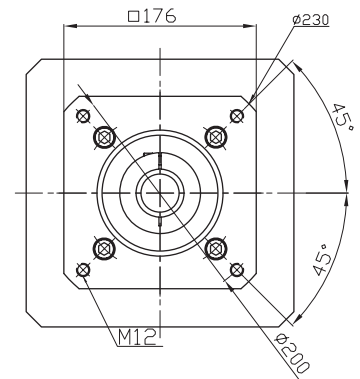
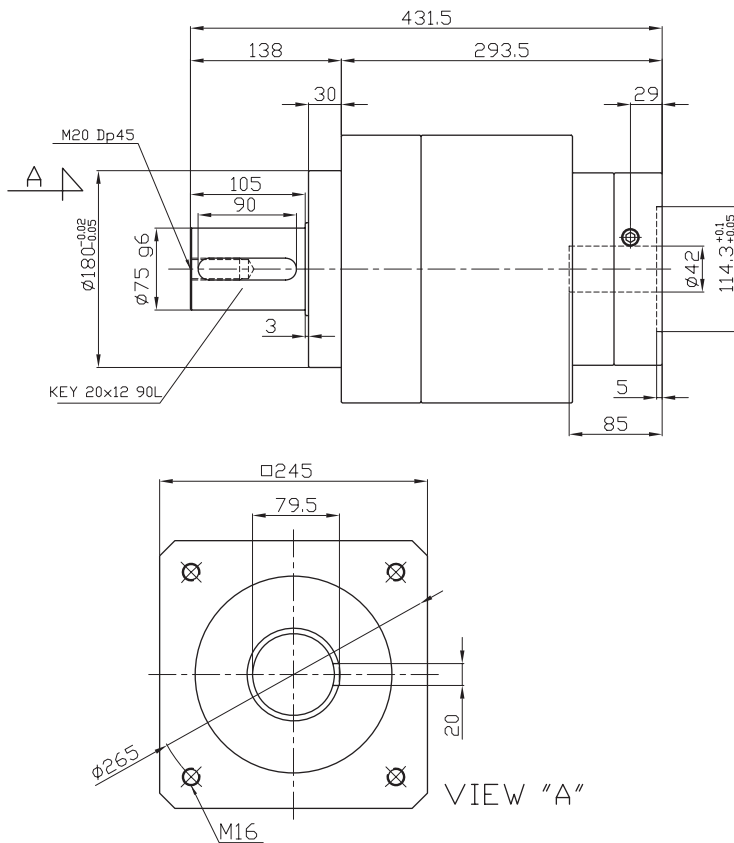
Outline (mm)	Stages	Rtio	Gear combinations	Nominal output torque (Nm)	Maximum output torque (Nm)	Nominal input speed (rpm)	Maximum input speed (rpm)
125	2	12	3*4	249	747	3000	6000
		15	3*5	249	747		
		16	4*4	301.6	904.8		
		20	4*5	301.6	904.8		
		25	5*5	343.2	1029.6		
		27	3*9	249	747		
		36	4*9	301.6	904.8		
		45	5*9	343.2	1029.6		
		81	9*9	200	600		
무게(Weight) ±3%	축직각(Radial load) (N)	축방향(Axial load) (N)	Moment of inertia (kg.m ²)	Backlash (arc min)	효율(Efficiency) (%)	수명(Machinal Life)	
10	3350	2080	1.055~1.7	BL1 : 5 min이하 BL2 : 10 min이하	92	20000 hr	

* 주의 : 위 도표에 표기된 Output torque 수치는 기구특성 안전율 미적용 수치임.

PBS245-180-2 Stage

Ratio : 12 ~ 81

Applicable Motor : 2000~7000 W



모터 삽입부는 모터 사양에 따라 변경 가능함.
Motor inserted blowing motors can be changed according to the specifications.

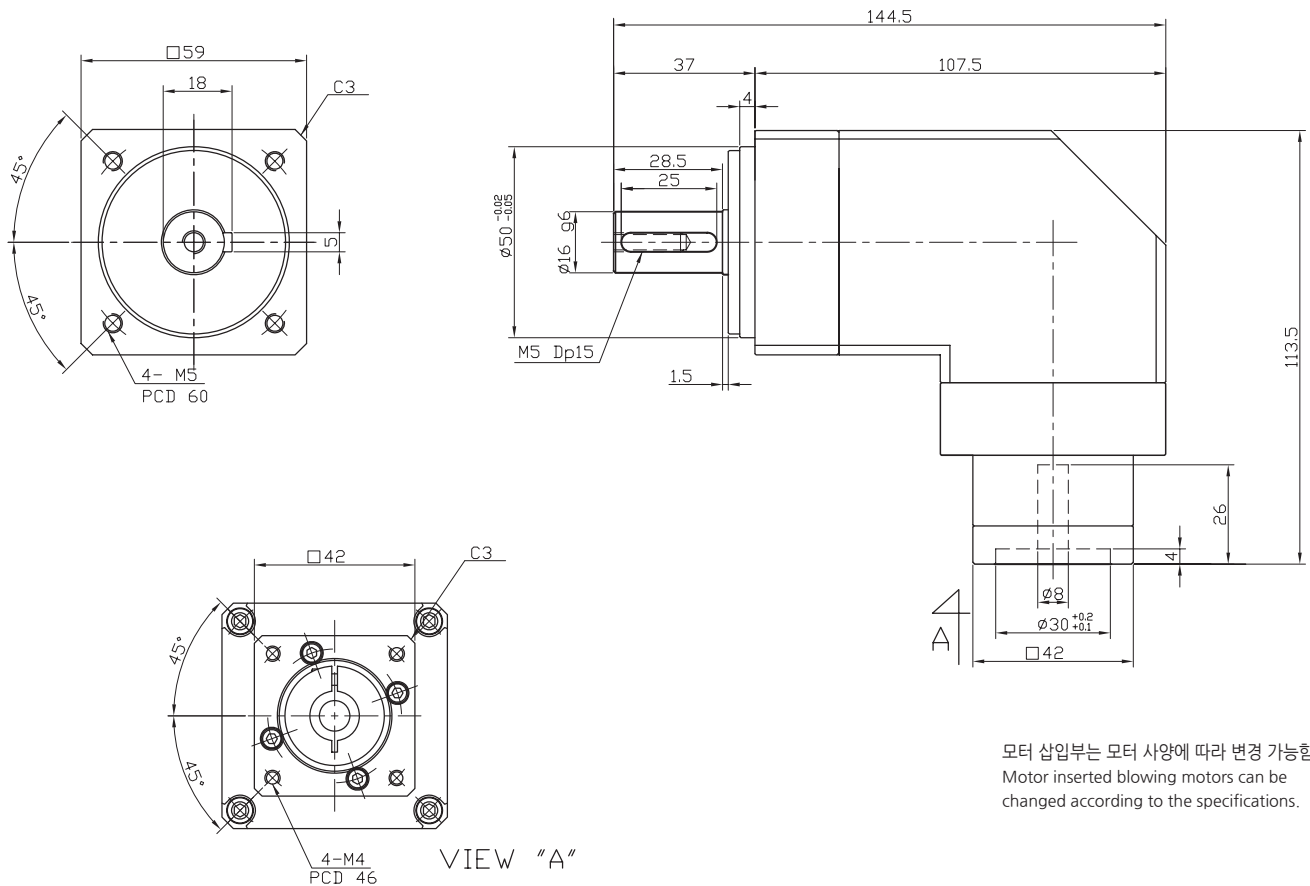
Outline (□)	Stages	Rtio	Gear combinations	Nominal output torque (Nm)	Maximum output torque (Nm)	Nominal input speed (rpm)	Maximum input speed (rpm)
245	2	12	3*4	1530	4590	2000 ~ 3000	4000
		15	3*5	1530	4590		
		16	4*4	1900	5700		
		20	4*5	1900	5700		
		25	5*5	1800	5400		
		27	3*9	1530	4590		
		36	4*9	1900	5700		
		45	5*9	1800	5400		
		81	9*9	1480	4440		
무게(Weight) ±3%	축직각(Radial load) (N)	축방향(Axial load) (N)	Moment of inertia (kg.m²)	Backlash (arc min)	효율(Efficiency) (%)	수명(Machinical Life)	
42	50000	25000	17.311~28.35	BL1 : 5 min이하 BL2 : 10 min이하	92	20000 hr	

* 주의 : 위 도표에 표기된 Output torque 수치는 기구특성 안전율 미적용 수치임.

PBR60-42-1,2 Stage

Ratio : 3 ~ 81

Applicable Motor : 50~100 W



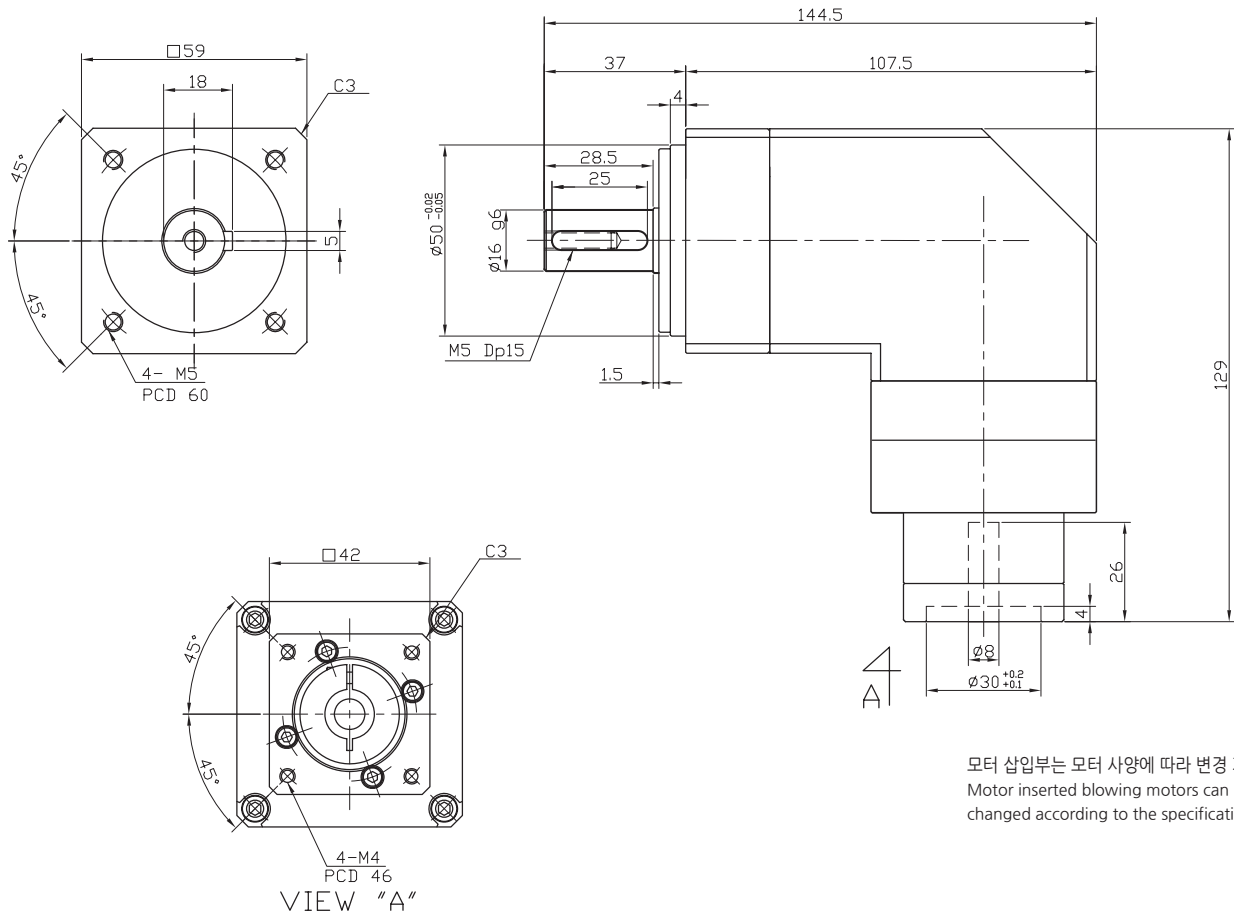
Outline (□)	Stages	Rtio	Gear combinations	Nominal output torque (Nm)	Maximum output torque (Nm)	Nominal input speed (rpm)	Maximum input speed (rpm)
60	1	3	3	48	144	3000	6000
		4	4	60	180		
		5	5	42	126		
		9	9	36	108		
	2	12	3*4	48	144		
		15	3*5	48	144		
		16	4*4	60	180		
		20	4*5	60	180		
		25	5*5	42	126		
		27	3*9	48	144		
		36	4*9	60	180		
		45	5*9	42	126		
	81	9*9	36	108			
무게(Weight) ±3%	축직각(Radial load) (N)	축방향(Axial load) (N)	Moment of inertia (kg.m ²)	Backlash (arc min)	효율(Efficiency) (%)	수명(Machinical Life)	
1.4	1530	765	0.106	BL1 : 5 min이하 BL2 : 10 min이하	92	20000 hr	

* 주의 : 위 도표에 표기된 Output torque 수치는 기구특성 안전율 미적용 수치임.

PBR60-42-1,2 Stage 10대1

Ratio : 10 ~ 90

Applicable Motor : 50~100 W



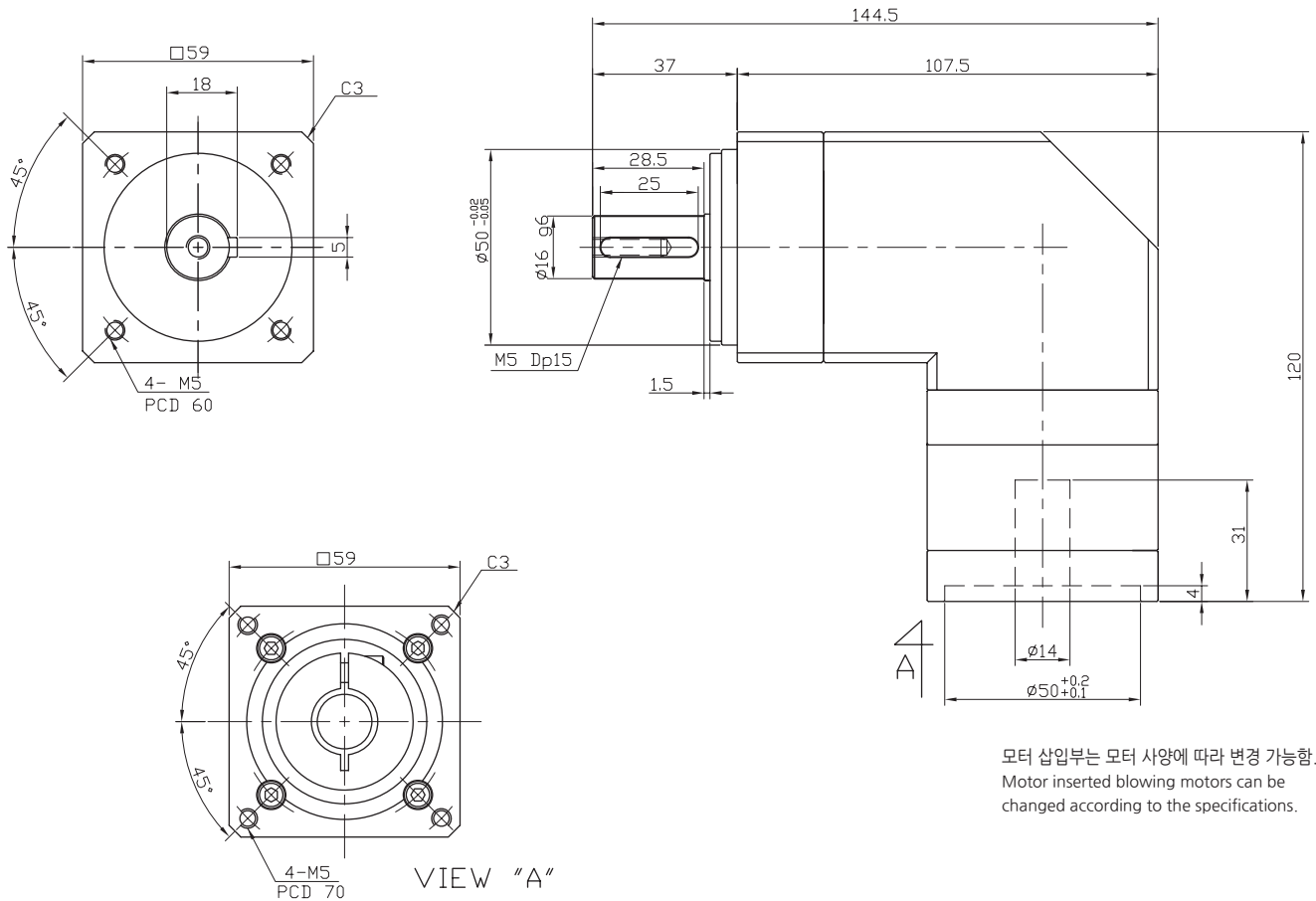
Outline (□)	Stages	Rtio	Gear combinations	Nominal output torque (Nm)	Maximum output torque (Nm)	Nominal input speed (rpm)	Maximum input speed (rpm)
60	1	10	1*10	38	114	3000	6000
	2	30	3*10	48	144		
		40	4*10	60	180		
		50	5*10	42	126		
		90	9*10	36	108		
무게(Weight) ±3%	축직각(Radial load) (N)	축방향(Axial load) (N)	Moment of inertia (kg.m ²)	Backlash (arc min)	효율(Efficiency) (%)	수명(Machinal Life)	
1.4	1530	765	0.106	BL1 : 5 min이하 BL2 : 10 min이하	92	20000 hr	

* 주의 : 위 도표에 표기된 Output torque 수치는 기구특성 안전을 미적용 수치임.

PBR60-1,2 Stage

Ratio : 3 ~ 81

Applicable Motor : 200~400 W



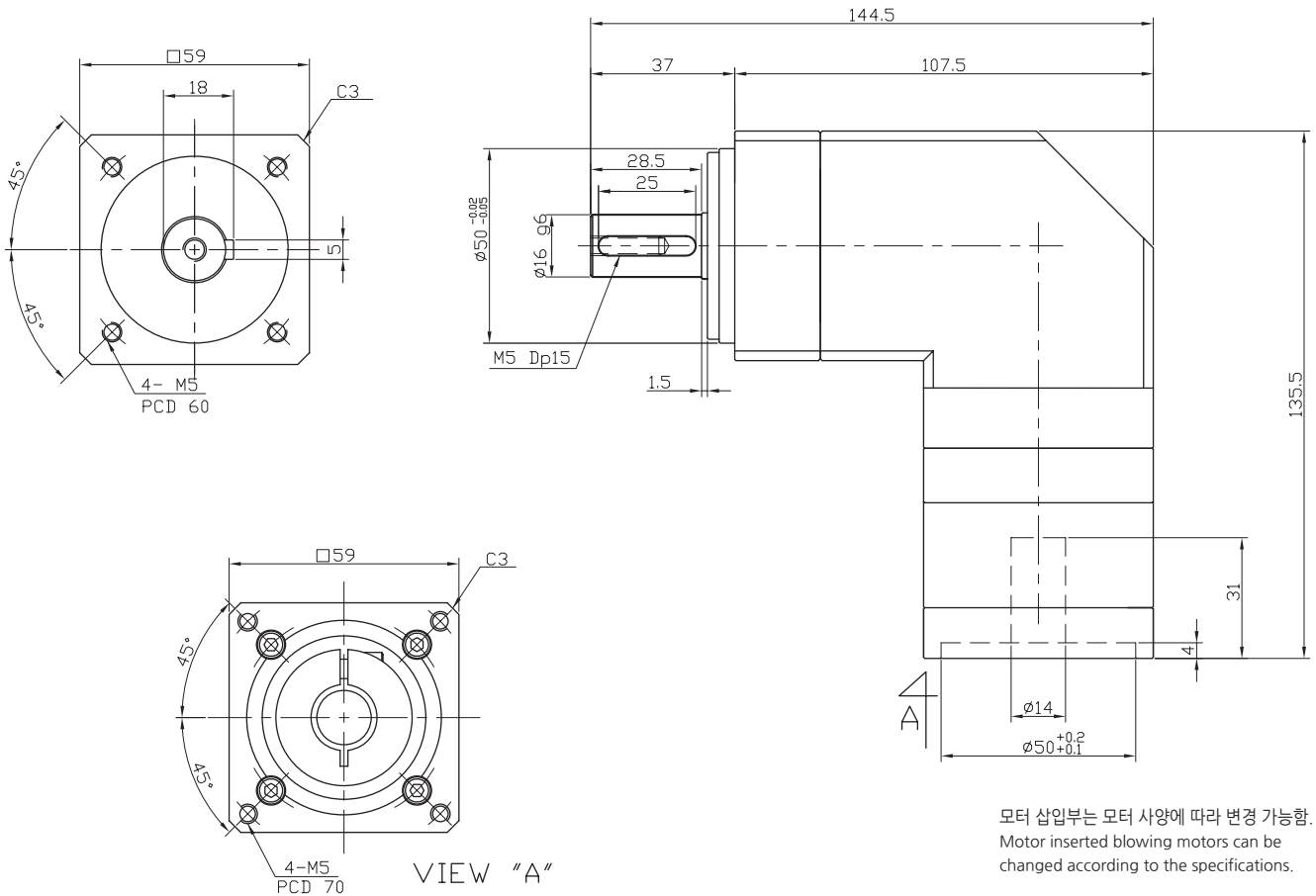
Outline (□)	Stages	Rtio	Gear combinations	Nominal output torque (Nm)	Maximum output torque (Nm)	Nominal input speed (rpm)	Maximum input speed (rpm)
60	1	3	3	48	144	3000	6000
		4	4	60	180		
		5	5	42	126		
		9	9	36	108		
	2	12	3*4	48	144		
		15	3*5	48	144		
		16	4*4	60	180		
		20	4*5	60	180		
		25	5*5	42	126		
		27	3*9	48	144		
		36	4*9	60	180		
		45	5*9	42	126		
	81	9*9	36	108			
무게(Weight) ±3%	축직각(Radial load) (N)	축방향(Axial load) (N)	Moment of inertia (kg.m ²)	Backlash (arc min)	효율(Efficiency) (%)	수명(Machinical Life)	
1.4	1530	765	0.106	BL1 : 5 min이하 BL2 : 10 min이하	92	20000 hr	

* 주의 : 위 도표에 표기된 Output torque 수치는 기구특성 안전율 미적용 수치임.

PBR60-1,2 Stage 10대1

Ratio : 10 ~ 90

Applicable Motor : 200~400 W



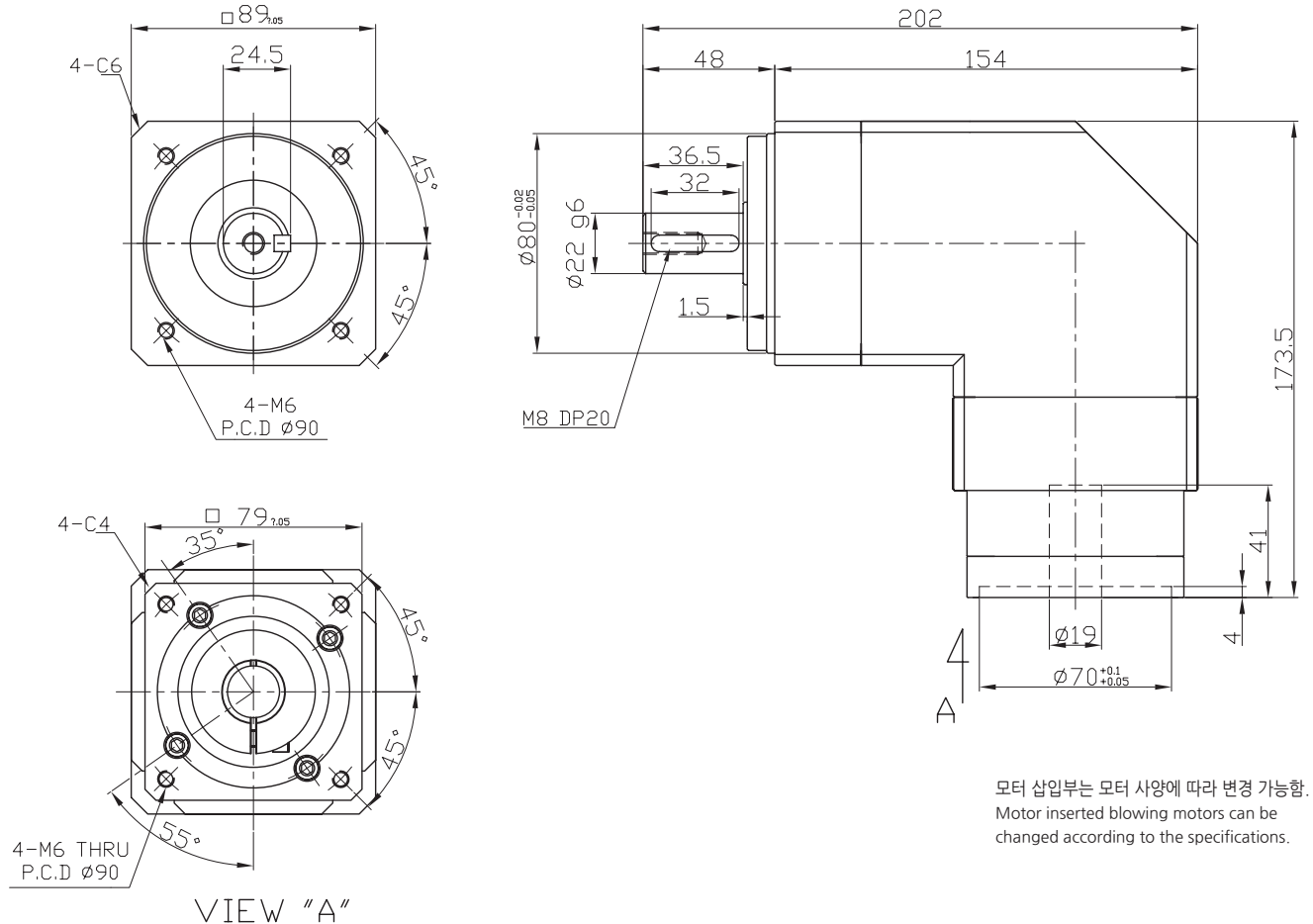
Outline (㉔)	Stages	Rtio	Gear combinations	Nominal output torque (Nm)	Maximum output torque (Nm)	Nominal input speed (rpm)	Maximum input speed (rpm)
60	1	10	1*10	38	57	3000	6000
	2	30	3*10	48	144		
		40	4*10	60	180		
		50	5*10	42	126		
		90	9*10	36	108		
무게(Weight) ±3%	축직각(Radial load) (N)	축방향(Axial load) (N)	Moment of inertia (kg.m²)	Backlash (arc min)	효율(Efficiency) (%)	수명(Machinal Life)	
1.4	1530	765	0.106	BL1 : 5 min이하 BL2 : 10 min이하	92	20000 hr	

* 주의 : 위 도표에 표기된 Output torque 수치는 기구특성 안전을 미적용 수치임.

PBR90-1,2 Stage

Ratio : 3 ~ 81

Applicable Motor : 750 W



Outline (□)	Stages	Rtio	Gear combinations	Nominal output torque (Nm)	Maximum output torque (Nm)	Nominal input speed (rpm)	Maximum input speed (rpm)
89	1	3	3	118	354	3000	6000
		4	4	154	462		
		5	5	110	330		
		9	9	98	294		
	2	12	3*4	118	354		
		15	3*5	118	354		
		16	4*4	154	462		
		20	4*5	154	462		
		25	5*5	110	330		
		27	3*9	118	354		
		36	4*9	154	462		
		45	5*9	110	330		
	81	9*9	98	294			
무게(Weight) ±3%	축직각(Radial load) (N)	축방향(Axial load) (N)	Moment of inertia (kg.m ²)	Backlash (arc min)	효율(Efficiency) (%)	수명(Machinical Life)	
3	3250	1625	0.438	BL1 : 5 min이하 BL2 : 10 min이하	92	20000 hr	

* 주의 : 위 도표에 표기된 Output torque 수치는 기구특성 안전율 미적용 수치임.