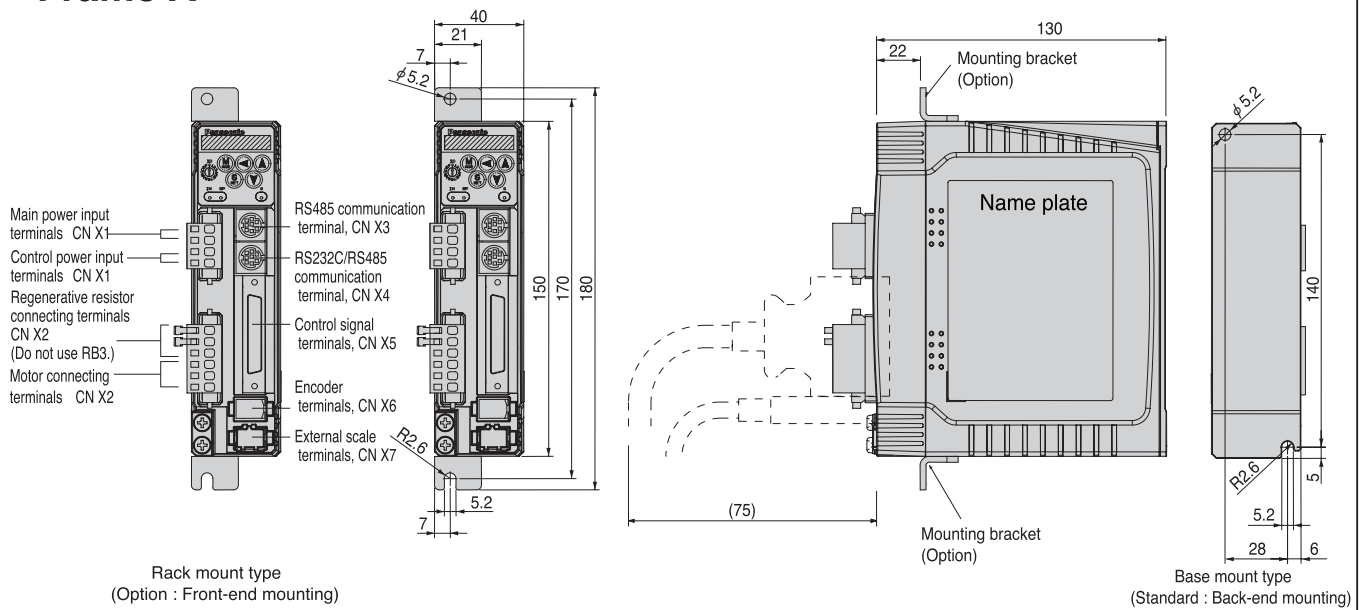


Driver/Dimensions

Frame A

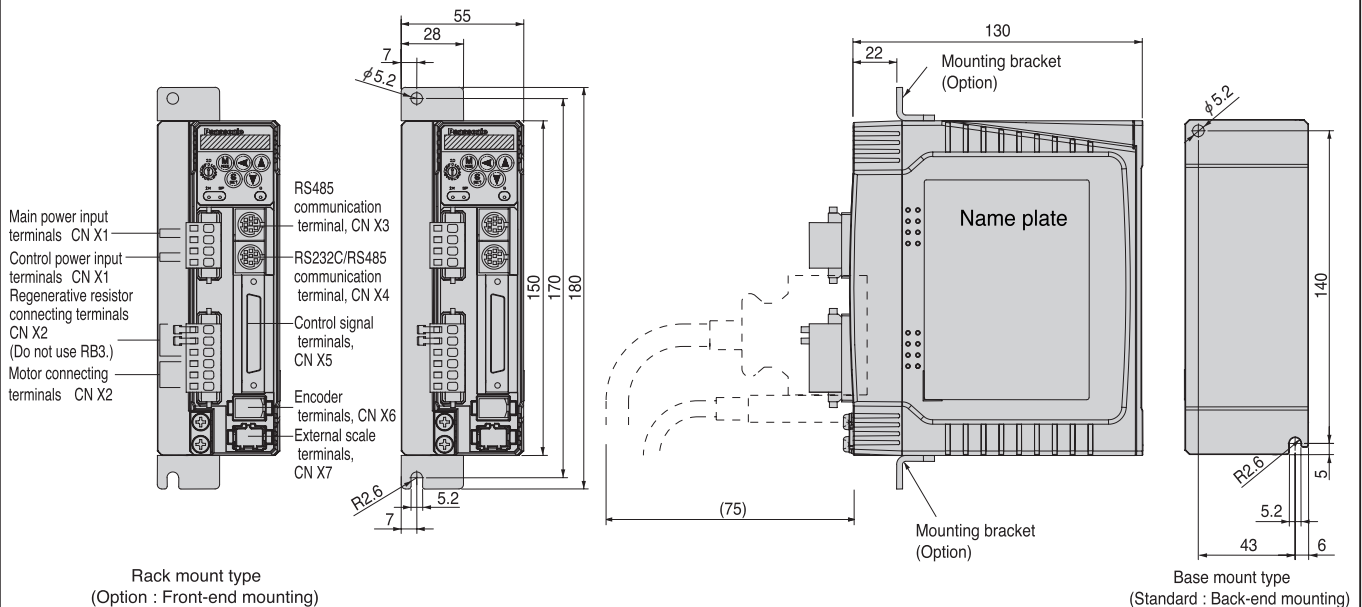


Connector at driver side

Connector sign	Connector type	Manufacturer
CNX7	53460-0621 (or equivalent)	Molex Inc.
CNX6	53460-0621 (or equivalent)	Molex Inc.
CNX5	529865071 (or equivalent)	Molex Inc.
CNX4	MD-S8000-10 (or equivalent)	J.S.T. Mfg.Co., Ltd
CNX3	MD-S8000-10 (or equivalent)	J.S.T. Mfg.Co., Ltd

Mass 0.8kg

Frame B



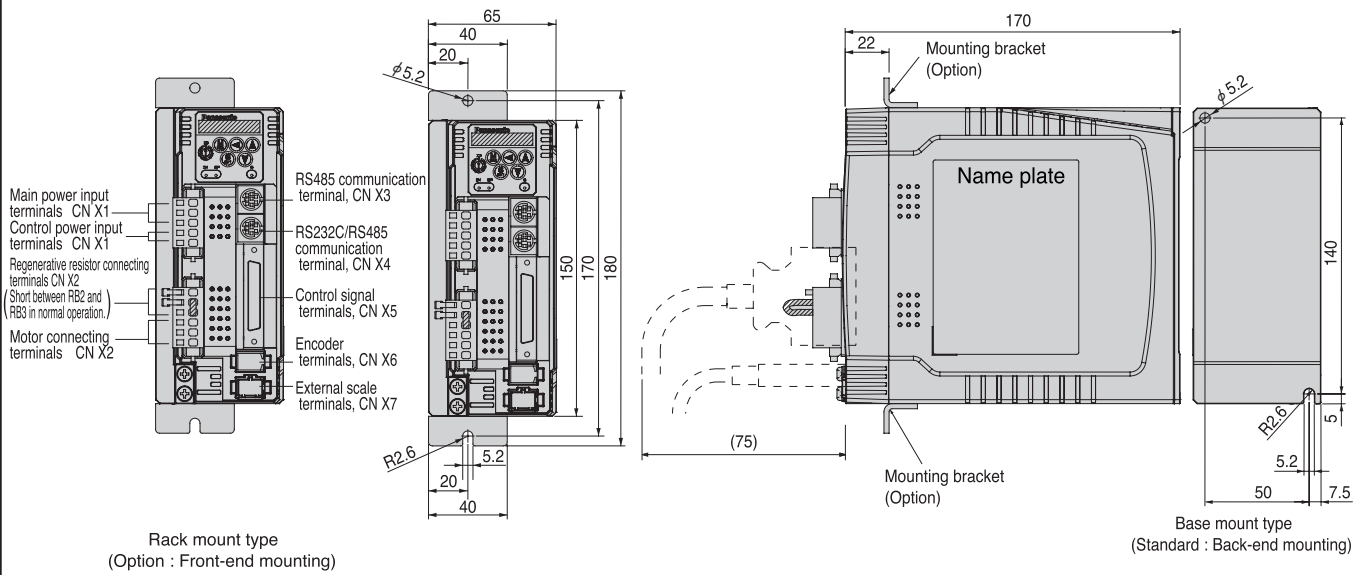
Connector at driver side

Connector sign	Connector type	Manufacturer
CNX7	53460-0621 (or equivalent)	Molex Inc.
CNX6	53460-0621 (or equivalent)	Molex Inc.
CNX5	529865071 (or equivalent)	Molex Inc.
CNX4	MD-S8000-10 (or equivalent)	J.S.T. Mfg.Co., Ltd
CNX3	MD-S8000-10 (or equivalent)	J.S.T. Mfg.Co., Ltd

Mass 1.1kg

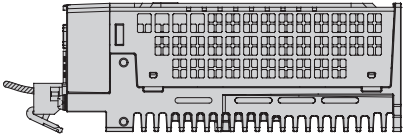
Driver/Dimensions

Frame C



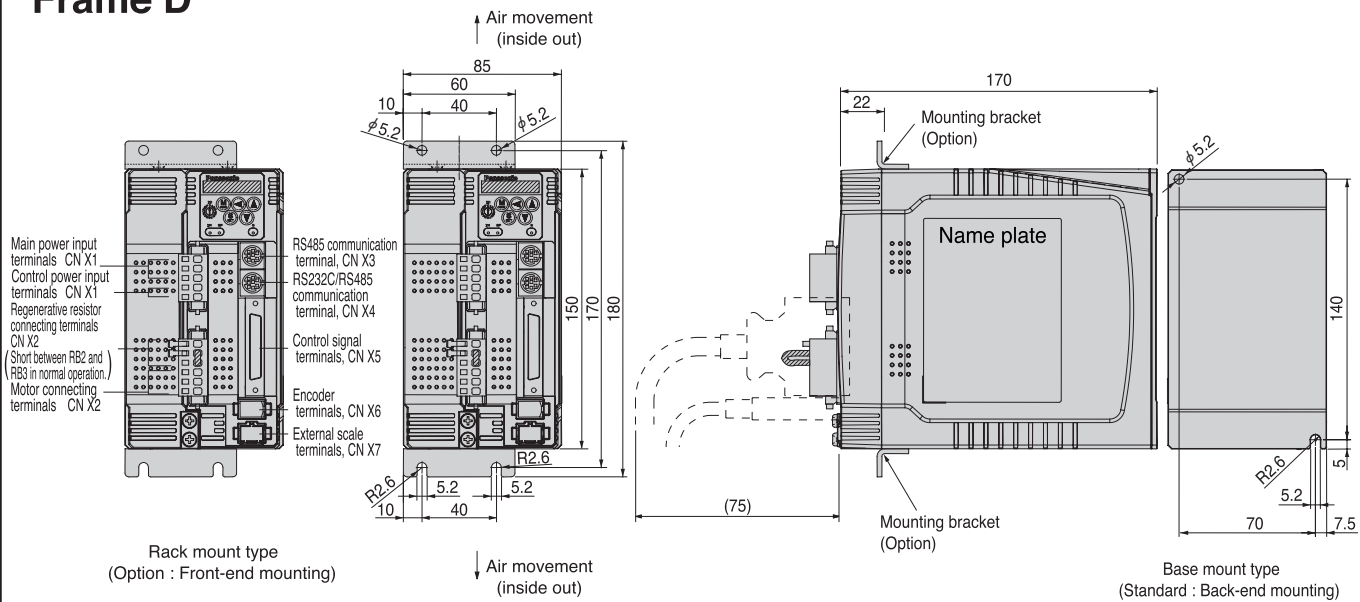
Connector at driver side

Connector sign	Connector type	Manufacturer
CNX7	53460-0621 (or equivalent)	Molex Inc.
CNX6	53460-0621 (or equivalent)	Molex Inc.
CNX5	529865071 (or equivalent)	Molex Inc.
CNX4	MD-S8000-10 (or equivalent)	J.S.T. Mfg.Co., Ltd
CNX3	MD-S8000-10 (or equivalent)	J.S.T. Mfg.Co., Ltd



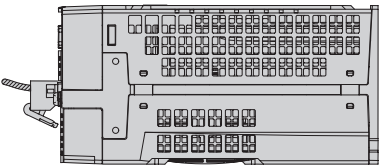
Mass 1.5kg

Frame D



Connector at driver side

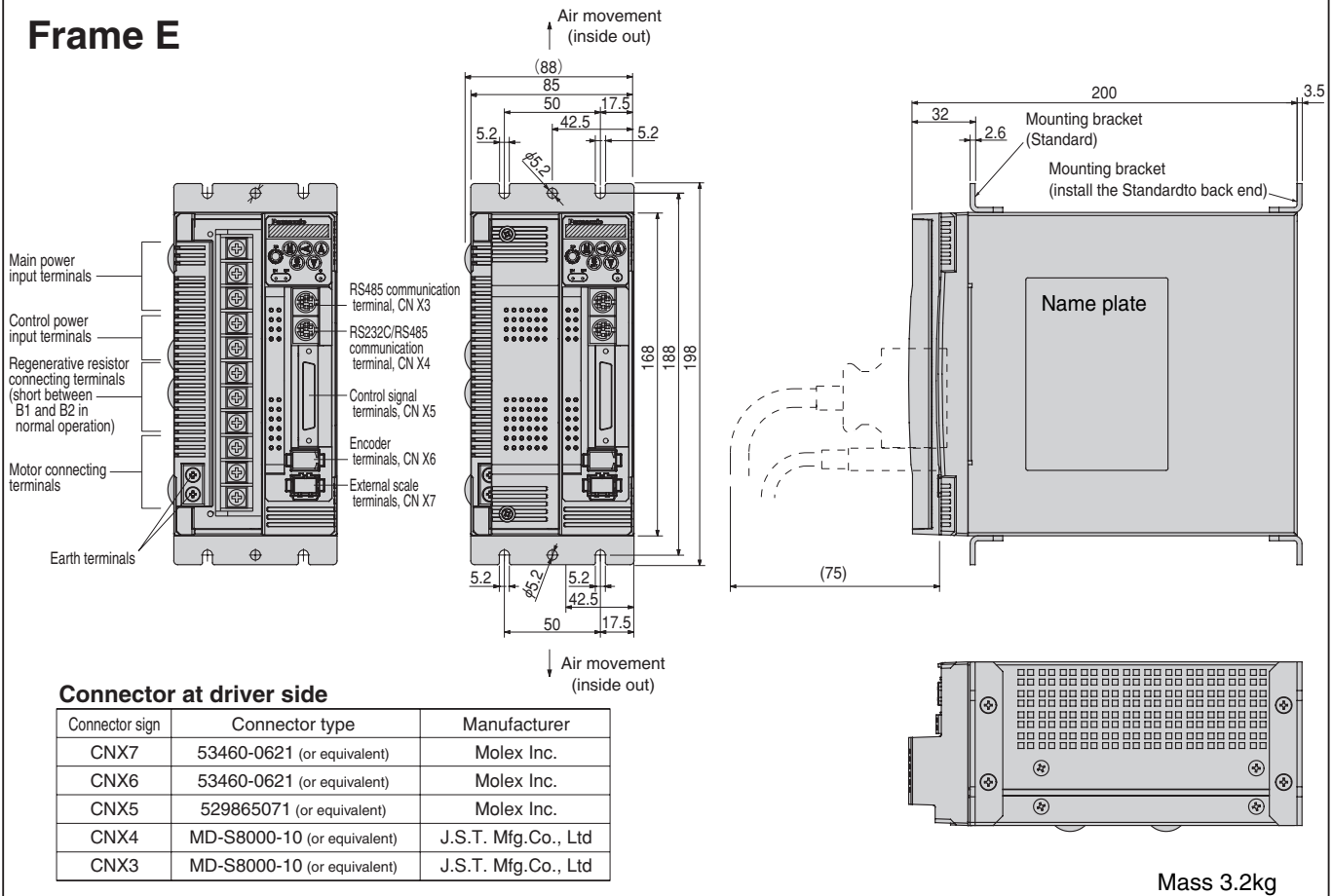
Connector sign	Connector type	Manufacturer
CNX7	53460-0621 (or equivalent)	Molex Inc.
CNX6	53460-0621 (or equivalent)	Molex Inc.
CNX5	529865071 (or equivalent)	Molex Inc.
CNX4	MD-S8000-10 (or equivalent)	J.S.T. Mfg.Co., Ltd
CNX3	MD-S8000-10 (or equivalent)	J.S.T. Mfg.Co., Ltd



Mass 1.7kg

Driver/Dimensions

Frame E



Frame F

